

# LITCHFIELD ENGINEERING

*Civil Engineering & Development Services*

---

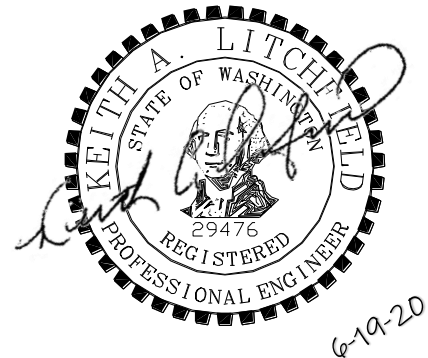
## TECHNICAL INFORMATION REPORT for the ALTMAN MERCER ISLAND-EAST LOT SFR

Prepared for:

Ben Altman  
91XX SE 64<sup>th</sup> Street  
Mercer Island, WA 98040

Prepared By:  
Keith A. Litchfield, P.E.

Date Issued:      June 19, 2020



## **TABLE OF CONTENTS**

1. PROJECT OVERVIEW.....	1
2. MINIMUM REQUIREMENTS.....	1
3. CONSTRUCTION STORMWATER POLLUTION PREVENTION PLAN .....	5

## **APPENDICES**

APPENDIX A	ON-SITE DETENTION TANK SIZING TABLE
APPENDIX B	GEOTECHNICAL ENGINEERING STUDY

## **LIST OF FIGURES**

FIGURE 1	VICINITY MAP
FIGURE 2	DOWNSTREAM MAP

## 1. PROJECT OVERVIEW

The proposed project is the construction of a new single-family residence on a vacant lot. The new residence will take access from East Mercer Way via a new paved driveway extending from an existing paved shared driveway. Developed stormwater will be collected, detained, and conveyed to the existing conveyance system within East Mercer Way. The existing site is undeveloped and covered with vegetation and trees. There is a high point onsite located in the southwestern corner of the site. From the high point the site slopes to the north at approximately 40%, to the west at 19%, to the east at 28% and to the south at 64%. Per City of Mercer Island GIS mapping, the site is within a mapped potential landslide hazard, seismic hazard, and erosion hazard area. Please refer to the Geotechnical Engineering Study prepared by Pan Geo, Inc. for more information regarding work within the critical areas.

Existing Adjacent Development:

Existing development adjacent to the subject site includes the following:

North – Single Family Residences

East – Single-Family Residences

South – East Mercer Way

West – East Mercer Way

## 2. MINIMUM REQUIREMENTS

Flow Chart #1: Flow Chart for Determining Requirements for New Development was utilized to determine which requirements apply to the project. Since the project is proposing less than 5,000 SF and not converting greater than  $\frac{3}{4}$  acres of vegetation to lawn, Minimum Requirements #1-5 apply to the new and replaced hard surfaces and converted vegetation areas. Please refer to page 3 for Flow Chart #1.

### Minimum Requirements #1-5:

Minimum Requirement No. 1 – Preparation of Stormwater Site Plans

A Stormwater Site Plan has been prepared for review by the City.

Minimum Requirement No. 2 – Construction Stormwater Pollution Prevention (SWPP)

A SWPP (i.e. TESC) plan is included in the project submittal.

Minimum Requirement No. 3 – Source Control of Pollution

Proposed construction source control measures include silt fence and temporary and permanent seeding. Operational and structural BMPs are not proposed. Please refer to Section 3: Construction Stormwater Pollution Prevention Plan for additional BMPs.

Minimum Requirement No. 4 – Preservation of Natural Drainage Systems and Outfalls

The natural drainage pattern and discharges from the site will be maintained to the maximum extent practicable. No significant adverse impacts to the downstream system are expected or anticipated.

Minimum Requirement No. 5 – On-site Stormwater Management

Flow Chart #2: Flow Chart for Determining LID MR #5 Requirements was utilized to determine the requirements to meet On-site Stormwater Management. Per Flow Chart #2, List #1 was used to determine the On-site Stormwater Management BMPs feasible for the project. Please refer to Flow Chart #2 on page 5.

List #1 Analysis:

Per Section 2.5.5 of the Stormwater Management Manual for Western Washington, the BMPs must be considered in the order listed in List #1 for each surface. The first BMP considered feasible must be implemented to the maximum extent feasible. Below is the feasibility evaluation of the BMPs in the order listed.

Lawn and Landscaped areas:

1. Post Construction Soil Quality and Depth – The onsite slope in the area of disturbed vegetation is steeper than 30%, therefore soil amendment is infeasible.

Roofs:

1. Full Dispersion or Full Infiltration – Infeasible due to steep slopes and lack of vegetated flow paths.
2. Rain Gardens or Bioretention – Infeasible; per city mapping the site is labeled as “non-infiltrating”.
3. Downspout Dispersion Systems – Infeasible due to steep slopes.
4. Perforated Stub-out Connection – Infeasible; site is mapped as “non-infiltrating”.

Other Hard Surfaces:

1. Full Dispersion – Infeasible due to steep slopes and lack of vegetated flow paths.
2. Permeable Pavement – Infeasible; per city mapping the site is labeled as “non-infiltrating”.
3. Sheet Flow Dispersion – Infeasible due to steep slopes.

Per the above BMP feasibility analysis, no on-site stormwater BMPS are feasible. Therefore, per Mercer Island City Code 15.09.050A(2), on-site detention is required. The onsite detention tank was sized using Table 1 from the City of Mercer Island’s On-site Detention Design Requirements. Table 1 is provided as Appendix A. Please see below for the proposed detention tank design/analysis.

New Plus Replaced Impervious Surfaces:

Roof	=	3,975 SF
Driveway	=	850 SF
Walk/Patio/Stairs	=	78 SF
<b><u>Total Impervious</u></b>	<b>=</b>	<b><u>4,903 SF</u></b>

Proposed Detention Tank Design per City of Mercer Island’s Table 1:

Tank Diameter	=	5 ft
Length	=	31 ft
1 <sup>st</sup> Orifice Diameter	=	0.5 in
Height of 2nd Orifice	=	3.5 ft
2 <sup>nd</sup> Orifice Diameter	=	1.3 in

Flow Chart #1:

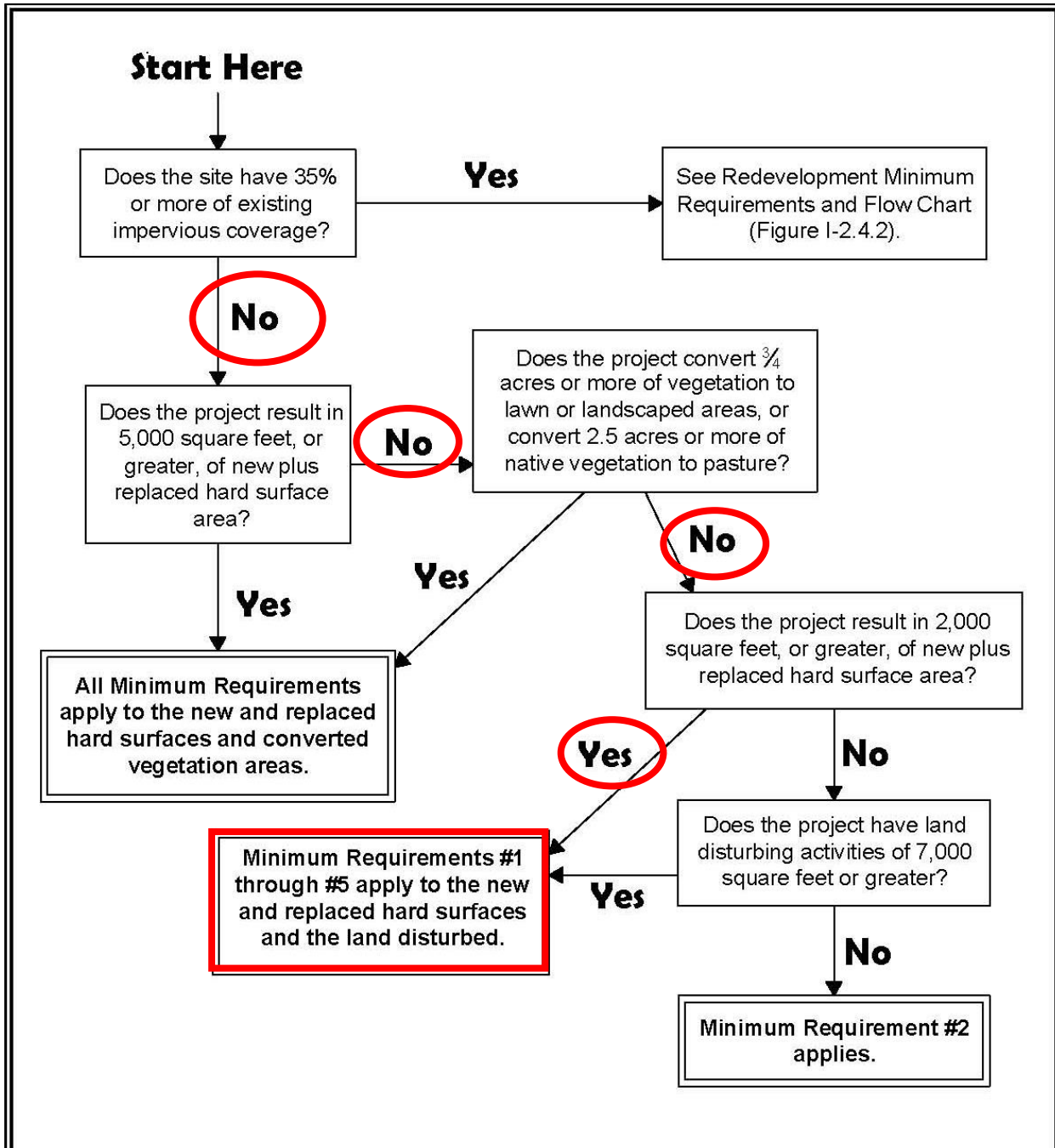
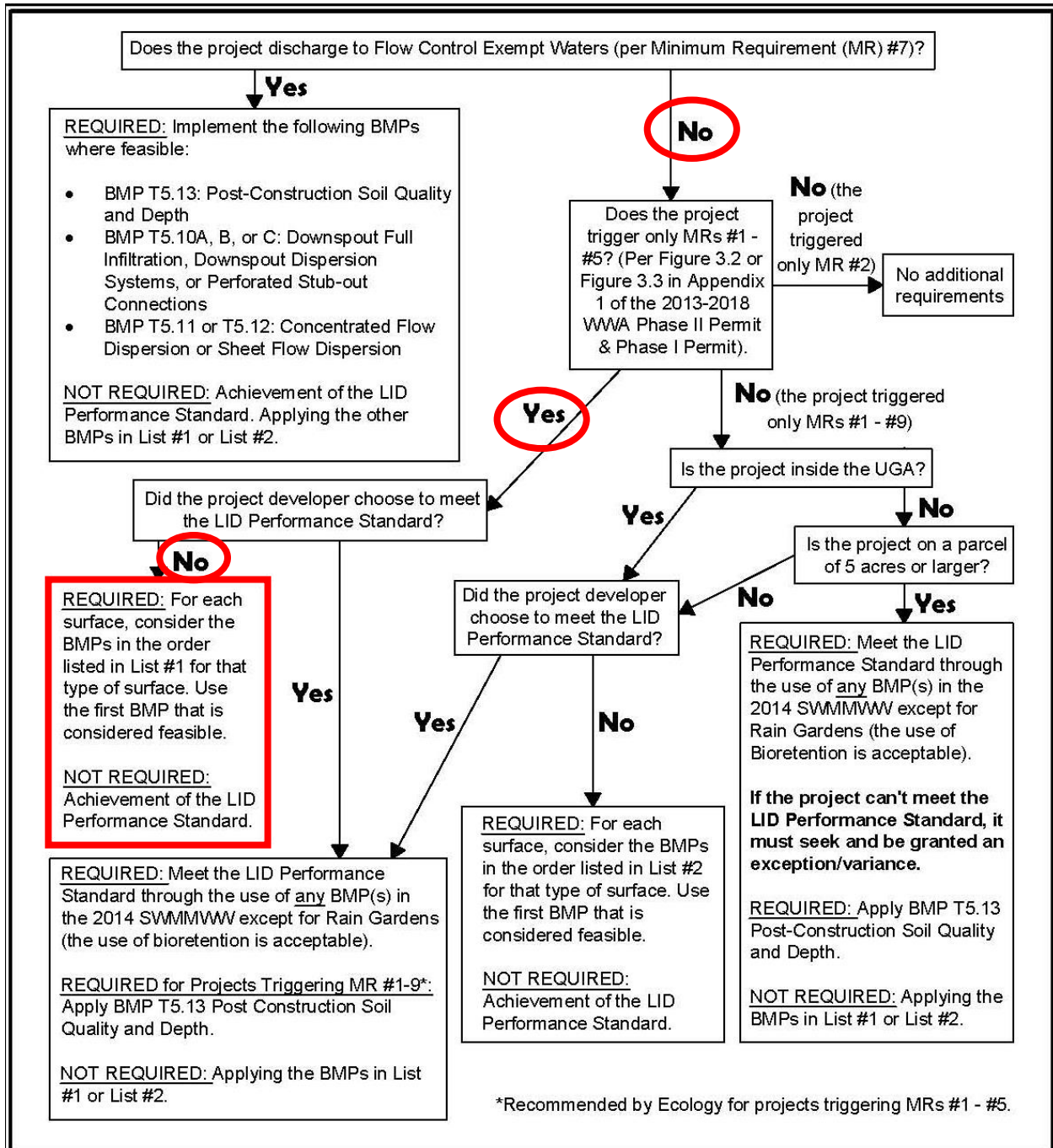


Figure I-2.4.1  
Flow Chart for Determining Requirements for  
New Development

Revised June 2015

Please see <http://www.ecy.wa.gov/copyright.html> for copyright notice including permissions, limitation of liability, and disclaimer.

**Flow Chart #2:**



\*Recommended by Ecology for projects triggering MRs #1 - #5.



**Figure I-2.5.1  
Flow Chart for Determining LID MR #5  
Requirements**

Revised June 2015

Please see <http://www.ecy.wa.gov/copyright.html> for copyright notice including permissions, limitation of liability, and disclaimer.

### **3. CONSTRUCTION STORMWATER POLLUTION PREVENTION PLAN**

The project SWPPP addresses the 13 required elements as follows:

Element 1 – Preserve Vegetation/Mark Clearing Limits – Clearing limits will be delineated with silt fence and orange construction fencing.

Element 2 – Establish Construction Access - A quarry spall construction entrance and a wheel wash will be provided if warranted.

Element 3 – Control Flow Rates – Flow rates will be controlled by using SWPP Element 4 sediment controls as necessary.

Element 4 – Install Sediment Controls – Silt fencing will be implemented and is expected to provide construction stormwater sediment control during construction.

Element 5 – Stabilize Soils – Stockpiled or unworked soils will be protected during construction by covering with plastic or temporary or permanent seeding. All exposed soils will be landscaped or seeded at the conclusion of the project.

Element 6 – Protect Slopes – Cut slopes will be protected during construction with plastic sheeting per BMP C123. Upon project completion, landscape planting and seeding will be implemented to provide permanent stabilization.

Element 7 – Protect Drain Inlets – The existing and newly constructed conveyance system inlets in the vicinity of the project site will be protected with catch basin filters during construction.

Element 8 – Stabilize Channels and Outlets – Construction will occur during the dry weather. No storm drainage channels or ditches shall be constructed either temporary or permanent. A small swale shall be graded to convey yard drainage around the structure using a shallow slope; it shall be seeded after grading and stabilized.

Element 9 – Control Pollutants – The small size of this project will limit the opportunity for discharge of pollutants. Waste/demolition debris will not be stockpiled, fueling will be done off-site and concrete trucks will be washed out off-site.

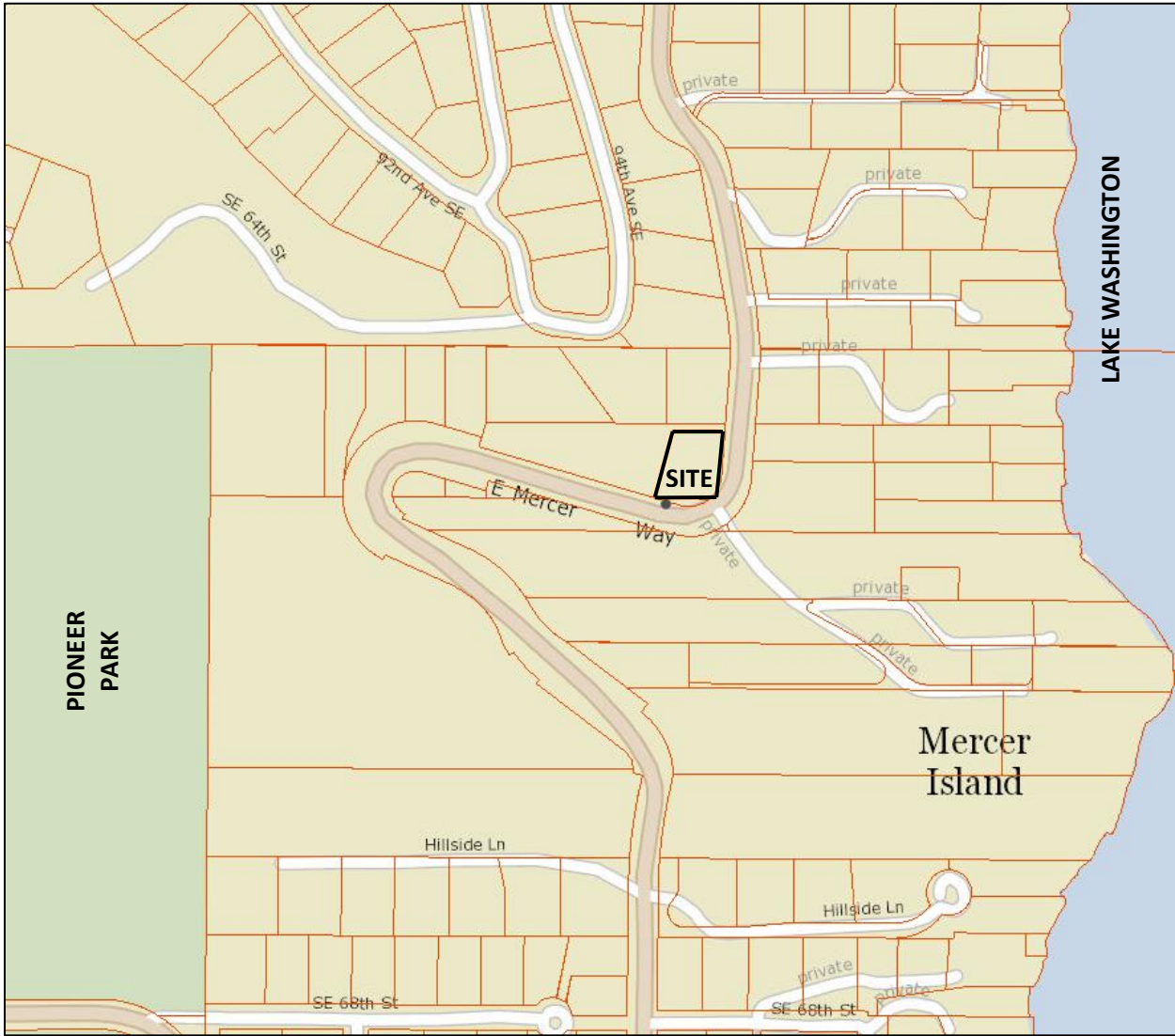
Element 10 – Control De-watering – De-watering is not anticipated.

Element 11 – Maintain BMPs – BMPs will be maintained as necessary to assure continued functioning.

Element 12 – Manage the Project – An inspector (sites less than 1 acre) will be present or on call to ensure BMPs are maintained and assess effectiveness of ESC measures. Rainy season requirements will be implemented if necessary.

Element 13 – Protect LID BMPs – N/A. No LID BMPs are proposed.

Figure 1 – Vicinity Map







**Appendix A**  
**On-site Detention Tank Sizing Table**

**Table 1**

ON-SITE DETENTION DESIGN FOR PROJECTS BETWEEN 500 SF AND 9,500 SF NEW PLUS REPLACED IMPERVIOUS SURFACE AREA

New and Replaced Impervious Surface Area (sf)	Detention Pipe Diameter (in)	Detention Pipe Length (ft)		Lowest Orifice Diameter (in) <sup>(3)</sup>		Distance from Outlet Invert to Second Orifice (ft)		Second Orifice Diameter (in)	
		B soils	C soils	B soils	C soils	B soils	C soils	B soils	C soils
500 to 1,000 sf	36"	30	22	0.5	0.5	2.2	2.0	0.5	0.8
	48"	18	11	0.5	0.5	3.3	3.2	0.9	0.8
	60"	11	7	0.5	0.5	4.2	3.4	0.5	0.6
1,001 to 2,000 sf	36"	66	43	0.5	0.5	2.2	2.3	0.9	1.4
	48"	34	23	0.5	0.5	3.2	3.3	0.9	1.2
	60"	22	14	0.5	0.5	4.3	3.6	0.9	0.9
2,001 to 3,000 sf	36"	90	66	0.5	0.5	2.2	2.4	0.9	1.9
	48"	48	36	0.5	0.5	3.1	2.8	0.9	1.5
	60"	30	20	0.5	0.5	4.2	3.7	0.9	1.1
3,001 to 4,000 sf	36"	120	78	0.5	0.5	2.4	2.2	1.4	1.6
	48"	62	42	0.5	0.5	2.8	2.9	0.8	1.3
	60"	42	26	0.5	0.5	3.8	3.9	0.9	1.3
4,001 to 5,000 sf	36"	134	91	0.5	0.5	2.8	2.2	1.7	1.5
	48"	73	49	0.5	0.5	3.6	2.9	1.6	1.5
	60"	46	31	0.5	0.5	4.6	3.5	1.6	1.3
5,001 to 6,000 sf	36"	162	109	0.5	0.5	2.7	2.2	1.8	1.6
	48"	90	59	0.5	0.5	3.5	2.9	1.7	1.5
	60"	54	37	0.5	0.5	4.6	3.6	1.6	1.4
6,001 to 7,000 sf	36"	192	128	0.5	0.5	2.7	2.2	1.9	1.8
	48"	102	68	0.5	0.5	3.7	2.9	1.9	1.6
	60"	64	43	0.5	0.5	4.6	3.6	1.8	1.5
7,001 to 8,000 sf	36"	216	146	0.5	0.5	2.8	2.2	2.0	1.9
	48"	119	79	0.5	0.5	3.8	2.9	2.2	1.7
	60"	73	49	0.5	0.5	4.5	3.6	2.0	1.6
8,001 to 8,500 sf <sup>(1)</sup>	36"	228	155	0.5	0.5	2.8	2.2	2.1	1.9
	48"	124	84	0.5	0.5	3.7	2.9	1.9	1.8
	60"	77	53	0.5	0.5	4.6	3.6	2.0	1.6
8,501 to 9,000 sf	36"	NA <sup>(1)</sup>	164	0.5	0.5	NA <sup>(1)</sup>	2.2	NA <sup>(1)</sup>	1.9
	48"	NA <sup>(1)</sup>	89	0.5	0.5	NA <sup>(1)</sup>	2.9	NA <sup>(1)</sup>	1.9
	60"	NA <sup>(1)</sup>	55	0.5	0.5	NA <sup>(1)</sup>	3.6	NA <sup>(1)</sup>	1.7
9,001 to 9,500 sf <sup>(2)</sup>	36"	NA <sup>(1)</sup>	174	0.5	0.5	NA <sup>(1)</sup>	2.2	NA <sup>(1)</sup>	2.1
	48"	NA <sup>(1)</sup>	94	0.5	0.5	NA <sup>(1)</sup>	2.9	NA <sup>(1)</sup>	2.0
	60"	NA <sup>(1)</sup>	58	0.5	0.5	NA <sup>(1)</sup>	3.7	NA <sup>(1)</sup>	1.7

**Notes:**

▪ Minimum Requirement #7 (Flow Control) is required when the 100-year flow frequency causes a 0.15 cubic feet per second increase (when modeled in WWHM with a 15-minute timestep). Breakpoints shown in this table are based on a flat slope (0-5%). The 100-year flow frequency will need to be evaluated on a site-specific basis for projects on moderate (5-15%) or steep (> 15%) slopes.

▪ Soil type to be determined by geotechnical analysis or soil map.

▪ Sizing includes a Volume Correction Factor of 120%.

▪ Upper bound contributing area used for sizing.

<sup>(1)</sup> On Type B soils, new plus replaced impervious surface areas exceeding 8,500 sf trigger Minimum Requirement #7 (Flow Control)

<sup>(2)</sup> On Type C soils, new plus replaced impervious surface areas exceeding 9,500 sf trigger Minimum Requirement #7 (Flow Control)

<sup>(3)</sup> Minimum orifice diameter = 0.5 inches

in = inch

ft = feet

sf = square feet

**Basis of Sizing Assumptions:**

Sized per MR#5 in the Stormwater Management Manual for Puget Sound Basin (1992 Ecology Manual)

SBUH, Type 1A, 24-hour hydrograph

2-year, 24-hour storm = 2 in; 10-year, 24-hour

storm = 3 in; 100-year, 24-hour storm = 4 in

Predeveloped = second growth forest (CN = 72 for Type B soils, CN = 81 for Type C soils)

Developed = impervious (CN = 98)

0.5 foot of sediment storage in detention pipe

Overland slope = 5%

**Appendix B**  
**GEOTECHNICAL ENGINEERING STUDY**

---

April 16, 2019  
File No. 19-062.100

Mr. Benjamin C. Altman, Exe.,  
The Estate of James Altman, Sr.  
**Attn: George Steirer, Plan to Permit, LLC.**  
10365 El Honcho Place  
San Diego, CA 92124-1219

**Subject: Geotechnical Engineering Study  
Proposed Development  
6423 East Mercer Way  
Mercer Island, WA**

Dear Mr. Altman,

As requested, PanGEO, Inc. has completed a geotechnical engineering study to assist you and your project team with the design and construction of your proposed Development at the above-address. This study was performed in general accordance with our mutually agreed scope of work outlined in our proposal dated February 8, 2019, which you subsequently authorized on February 16, 2019. Our service scope included reviewing readily-available geology maps for the project vicinity, reviewing preliminary design plans, drilling eight test borings, conducting a site reconnaissance, and developing the conclusions and recommendations presented in this report.

#### **SITE AND PROJECT DESCRIPTION**

For reference, the address of 6423 East Mercer Way is used. The site at this address is currently developed with a single-family residence built in 1968. The properties for the proposed development are located on separate and individual lots around the reference property, and have a combined area of 35,522 square feet (see Figures 1 and 2). All properties are owned by the estate of James Altman, Sr. The ground surface in the vicinity of all the lots generally slopes down to the east and south with up to 60 feet of elevation relief. The south facing slope descends to E. Mercer Way and is especially steep.

The easternmost, 15,812 sq. ft. parcel (302405-9151) is located above the 90-degree bend in E. Mercer Way (see Figures 2 and 3a). Moderately steep slopes surround the property to the south and west, forming a semi-open bowl with about 30 feet of total relief. The surface within the bowl is relatively level, and the near 90-degree angle between the south and west slopes suggest the site has been excavated. Preliminary plans call for developing the bowl portion of the property (see Figure 2).

Parcel 302405-9001 (see Figures 2 and 3b) is located north of the property at 6423 E. Mercer Way, between the reference property and SE 64<sup>th</sup> Street. The site slopes generally steeply to the east and south, and the southwestern portion of the property is traversed by a moderately sloping, east facing ridge. A prominent drainage swale occupies the northeastern part of the site. A steep slope, up to 1H:1V, divides SE 64<sup>th</sup> Street from the main level of the property. Preliminary plans call for the development of the ridge crest and upper swale portion of the property (see Fig. 2).

The parcel (#302405-9213) located at 9167 SE 64<sup>th</sup> Street is also irregularly shaped, undeveloped, and 18,635 sq. feet in size (see Figures 2 and 3c). The property slopes moderately to steeply to the south, with nearly 60 feet of relief down to East Mercer Way. There is a moderately sloping bench area at about elevation 170 feet, which is about 20 feet below SE 64<sup>th</sup> Street. Preliminary plans call for the development of the area above the bench (see Figure 2).

All the properties are mapped within a landslide hazard area by the City of Mercer island. As such, any development will need to consider the steep slopes and landslide hazards. We understand that while plans are conceptual in nature, but that you wish a “comprehensive” geotechnical study to consider the issues of geological hazards, and to support permitting efforts going forward for all parcels.

The conclusions and recommendations outlined in this report are based on our understanding of the proposed development, which is in turn based on the project information provided. If the above project description is incorrect, or the project information changes, we should be consulted to review the recommendations contained in this study and make modifications, if needed.

### **SUBSURFACE EXPLORATIONS**

Subsurface conditions at the site were explored with eight borings (PG-1 to PG-8) which were drilled at the locations shown on Figure 1. Three of the new borings were drilled on Parcel

302405-9151, and four of the new borings were drilled on Parcel 302405-9001. No previous exploration had been done on these two parcels. One new boring was drilled on parcel 3024059213 to supplement existing subsurface information from previously drilled borings on the property (AMEC Earth & Environmental, Inc., 2001). The new explorations were advanced on March 7, 19 and 21, 2019, using an EC-95 track mounted drill and a hand-operated portable Acker drill rig, both owned and operated by Borettec, Inc., of Spangle, Washington. The new borings were drilled to depths of 11.5 to 41.5 feet below the existing ground surface.

Soil samples were obtained from the borings at 2½-foot and 5-foot depth intervals in general accordance with Standard Penetration Test (SPT) sampling methods (ASTM test method D-1586) in which the samples were obtained using a 2-inch outside diameter split-spoon sampler. The sampler was driven 18-inches into the soil using a 140-pound weight freely falling a distance of 30 inches. The number of blows required for each 6-inch increment of sampler penetration was recorded. The number of blows required to achieve the last 12 inches of sample penetration is defined as the SPT N-value. The N-value provides an empirical measure of the relative density of cohesionless soil, or the relative consistency of fine-grained soils.

A geologist from our office was present to observe the drilling, assist in sampling, and to describe and document the soil samples obtained from the borings. The soil samples were described and field classified in general accordance with ASTM D 2488-00, following the guidelines of the Unified Soil Classification System. Summary logs of the new borings are included in Appendix A. The logs of two borings by AMEC used in this study are also included in Appendix A.

## **SITE GEOLOGY AND SUBSURFACE CONDITIONS**

### **SITE GEOLOGY**

Based on the Geologic Map of Mercer Island (Troost and Wisher, 2006), the predominant near surface soil unit on the property consists of mass wasting deposits from past slope movements. The mass wasting deposits are described as loose to dense or soft to stiff, colluvium, landslide debris and soil with indistinct morphology. Locally, organic material may be found in the mass wasting deposits. The surficial mass wasting deposits between SE 64<sup>th</sup> Street and East Mercer Way are mapped as underlain mainly by Lawton Clay Deposits (Qvlc), with some Pre-Olympia Nonglacial Deposits (Qpon) near East Mercer Way. Lawton Clay deposits are described as very

stiff to hard silt, silty clay and clayey silt, laminated to massive. Pre-Olympia Nonglacial deposits are described as very dense or hard, sand, gravel, silt, clay and organic beds.

### **SUBSURFACE SOIL AND GROUNDWATER CONDITIONS**

The soils observed in the borings consisted of interbedded sand and silty clay deposits, with silty clay occurring near the top of the slope and sand underneath the clay and lower down on the slope. Most of the borings encountered colluvium near the surface, consisting of locally derived native material that has been disturbed by slope or mass wasting processes. Fill was found only in PG-2 near the foot of the slope. In general, the deposits found on the site do not resemble Lawton Clay deposits as mapped, and in our opinion the project area is underlain almost entirely by pre-Olympia strata.

The following describes the soils encountered in the borings. Please refer to the boring logs (Figures 4 to 11) for more detailed descriptions:

**UNIT 1: Fill**– Fill was observed in PG-2 on off the main driveway access to the homes just off East Mercer Way. The fill consisted of 5½ feet of loose, brown, silty, fine SAND. The fill contained occasional organics and exhibited a mixed texture. As indicated above, the hollow on Parcel 302405-9151 appears to have been excavated, and we anticipate that this was the source of the fill, which was used to fill a shallow stream drainage to provide access to the house at 6423 E Mercer Way and one other house. The fill soil in PG-1 was underlain by 4 feet of red brown, silty, fine SAND, which was lumped in with the fill based on N-value, but which may be alluvial in nature.

**UNIT 2: Colluvium** – The borings near the top of the slope, PG-6, PG-7 and PG-8 encountered a layer of disturbed soil at the surface. The colluvium was identified by low N-values and mixed textures. In PG-6 on Parcel 302405-9001, sited just below SE 64<sup>th</sup> Street, the colluvium consisted of two layers, a three-foot thick layer of loose, brown, silty, fine to coarse SAND at the surface, underlain by a 2½-foot thick layer of loose, brown, clayey SILT with fine sand. Both layers contained occasional gravel. PG-8 was located below PG-6 near the top of the east facing drainage swale on Parcel 302405-9001. This boring encountered a 4½ feet of loose or stiff, brown, silty CLAY to clayey SILT. The soil is slightly to low plastic, with some layers showing rapid dilatancy. In PG-7 on the property at 9167 SE 64<sup>th</sup> Street, the colluvium consisted of 4½ feet of loose,



yellow brown SILT with fine sand, underlain by 4½ feet of medium dense, silty, fine SAND to sandy SILT on this property. This lower unit may be a bed of advanced outwash, but was interpreted as colluvium based on the low N-values. The AMEC borings (B-4 and B-5) also encountered colluvium consisting of soft to medium stiff clayey SILT to sandy SILT, to a depth of roughly 15 and 11 feet, respectively.

**UNIT 3: *pre-Olympia Silty Clay Deposits*** – Beds consisting mainly of silty, lean CLAY, with beds of non-plastic to slightly plastic clayey SILT, were found from the surface in PG-3, PG-4 and PG-5, and beneath the colluvium in PG-6 to PG-8. PG-3 was drilled just below the driveway to 6423 E Mercer Way, and penetrated 8 feet of medium dense, non-plastic, brown gray SILT. PG-4 and PG-5 on Parcel 302405-9151, both penetrated 9 ½ feet very stiff to hard, brown gray, low plastic, silty, lean CLAY. The clay was laminated and the strata appeared to be dipping at angles of 5 to 25 degrees. In PG-4 the thick silty clay was underlain by 2½ feet of thinly interbedded clayey silt and silty, fine sand, possibly a transitional unit. Below the colluvium in PG-6 the boring encountered 5 feet of dense, brown, slightly plastic, clayey SILT with some fine sand, followed by 10 feet of very stiff to hard, brown, low plastic, silty, lean CLAY. PG-8 penetrated interbedded stiff to hard brown to brown gray, low plastic, silty, lean CLAY and slightly plastic, medium dense to very dense, clayey SILT with fine sand. At depth in PG-7 we found stiff to very stiff, gray, silty, lean CLAY.

**UNIT 4: *pre-Olympia Sand Deposits*** – Sand beds were encountered at the ground surface (PG-1) or at depth in all borings except PG-7 and PG-8. Where encountered at depth (PG-4 to PG-6), the sand strata consisted of beds of medium dense to very dense, brown to brown gray, silty, fine SAND or fine to medium SAND.

Groundwater was encountered in PG-2, PG-7 and PG-8. Groundwater was not found in PG-1, PG-3, or PG-4 to PG-6. The groundwater in PG-1 is presumed to be flow along the filled in drainage swale. In PG 7 and PG-8 the groundwater is perched in the shallow colluvial deposits above less permeable clay deposits. Borings B-4 and B-5 encountered groundwater at 9 and 8 feet below surface, respectively. Groundwater elevations and seepage rates are likely to vary depending on the season, local subsurface conditions, and other factors. Groundwater levels and seepage rates are normally highest during the winter and early spring.

## **GEOLOGY HAZARDS ASSESSMENT**

### ***Landslide Hazards and Steep Slopes***

According to the City of Mercer Island's Geologic Hazards Map, the site lies within a potential landslide hazard area where landslides have occurred in the past. Based on our field observations and the results of our field exploration, it is our opinion that the site is globally stable in its current configuration. It is also our opinion that the planned constructions will not adversely impact the overall stability of the subject and surrounding properties, provided that the recommendations presented in this report are properly incorporated into the design and construction of the project.

### ***Erosion Hazards***

The site also lies within a mapped potential erosion hazard area. Based on the results of our test borings, the silty and clayey site soils of upper portion of the site are anticipated to exhibit moderate to low erosion potential. The sand soils may pose a moderate to high risk of erosion,. In our opinion, the erosion hazard at the site can be effectively mitigated with the best management practice during construction and with properly designed and implemented landscaping for permanent erosion control. During construction, the temporary erosion hazard can be effectively managed with an appropriate erosion and sediment control plan, including but not limited to installing silt fencing at the construction perimeter, limiting removal of vegetation from the construction area, placing rocks or hay bales at the disturbed/traffic areas and on the downhill side of the project, covering all stockpiled soil or cut slopes with plastic sheets, constructing a temporary drainage pond to control surface runoff and sediment traps if needed, placing rocks at the construction entrance, etc. Permanent erosion control measures should include establishing vegetation, landscape plants, and hardscape established at the end of project.

### ***Seismic Hazards***

The site also lies with a mapped potential seismic hazard area, which may be susceptible to risk of damage from earthquake-induced ground shaking, slope failure, soil liquefaction, or surface faulting. While the site is contained within the area mapped as having a known or suspected seismic hazard, the relative lack of groundwater and the cohesive soils in the two eastern parcels suggest the hazard is not high or moderate. The parcel at 9167 SE 64<sup>th</sup> Street may have

a moderate potential for liquefaction, which may be by supporting any structure on driven pin pile foundations. Potential remedial measures are subsequently discussed in the engineering design recommendations.

## GEOTECHNICAL DESIGN RECOMMENDATIONS

### SEISMIC DESIGN PARAMETERS

The following provides seismic design parameters for the site that are in conformance with the 2012 International Building Code (IBC), which specifies a design earthquake having a 2% probability of occurrence in 50 years (return interval of 2,475 years), and the 2008 USGS seismic hazard maps:

Site Class	Spectral Acceleration at 0.2 sec. (g)	Spectral Acceleration at 1.0 sec. (g)	Site Coefficients		Design Spectral Response Parameters	
	S <sub>s</sub>	S <sub>1</sub>	F <sub>a</sub>	F <sub>v</sub>	S <sub>DS</sub>	S <sub>D1</sub>
D	1.449	0.554	1.0	1.5	0.996	0.554

### HOUSE FOUNDATIONS

In general, the houses may be supported on conventional spread footings and/or driven pin piles. Parcel 302405-9151 may be supported on spread footings where located over dense sand in hillside cuts, but the loose sand fill area will require pin piles. Parcel 302405-9001 may be founded on spread footings in the ridge area around PG-4 and PG-5, but may require pin piles if the house extends into the swale around PG-8. Pin pile foundations should be used to support the house at 9167 SE 64<sup>th</sup> Street to mitigate potential settlement due to the loose surficial soils. The following presents our recommendations for spread footings and pin pile foundations.

#### *Conventional Foundations*

Based on results of our test borings, dense soil is anticipated to be present at the foundation level in portions of parcels 302405-9151 and 302405-9001. How much of any proposed structures may be placed on spread footings depends on the final footprint and location of the structure on the property.

### ***Allowable Bearing Pressure***

We recommend using an allowable soil bearing pressure of 3,000 pounds per square feet (psf) be used for footings bearing on dense to very dense, native pre-Olympia sand or clay deposits, or compacted fill. The recommended allowable bearing pressures are for dead plus live loads. For allowable stress design, the recommended bearing pressure may be increased by one-third for transient loading, such as wind or seismic forces. Continuous and individual spread footings should have minimum widths of 18 and 24 inches, respectively. Footings should be placed at least 18 inches below final exterior grade. Interior footings should be placed at least 12 inches below the top of slab.

### ***Foundation Performance***

Total and differential settlements are anticipated to be within tolerable limits for foundation designed and constructed as discussed above. Conventional footings bearing on competent native soil and structural fill may experience static settlement of less one inch and differential settlement between adjacent columns should be less than about ½ inch. Most settlement should occur during construction as loads are applied.

### ***Lateral Resistance***

Lateral forces from wind or seismic loading may be resisted by a combination of passive earth pressures acting against the embedded portions of the foundations and walls, and by friction acting on the base of the foundations. Passive resistance values may be determined using an equivalent fluid weight of 300 pounds per cubic foot (pcf). This value includes a factor safety of at least 1.5 assuming that densely compacted structural fill will be placed adjacent to the sides of the foundation. A friction coefficient of 0.4 may be used to determine the frictional resistance at the base of the foundation. This coefficient includes a factor of safety of approximate 1.5. Unless covered by pavements or slabs, the passive resistance in the upper 12 inches of soil should be neglected.

### ***Footing Subgrade Preparation***

All footing subgrades should be carefully prepared. The adequacy of footing subgrade should be verified by a representative of PanGEO, prior to placing forms or rebar. The footing subgrade should be in a dense condition prior to concrete pour. Any footing over-excavations should be backfilled with Seattle Type 2 or 17 material, which should be placed in 8-inch thick lifts and

compacted to a dense condition. Footing excavations should be observed by PanGEO to confirm that the exposed footing subgrade is consistent with the expected conditions and adequate to support the design bearing pressure.

It should be noted that site soils are highly moisture sensitive and can be easily disturbed when exposed to moisture. If footings are constructed during wet weather, the exposed footing subgrade should be adequately protected to prevent disturbance. The footing subgrade may be protected with at least 3 inches of lean-mix concrete, or 4 to 6 inches of compacted crushed surfacing base course (CSBC).

### ***Pin Pile Foundations***

We recommend pin pile foundation support for any structure constructed on the 9167 SE 64<sup>th</sup> Street parcel, and for portions of the other two parcels including the fill area of parcel 302405-9151 and the upper swale area of 302405-9001. Pile parameters are as follows:

***Pin Pile Sizes*** - In our opinion, 3-, 4-, or 6-inch diameter, Schedule 40, galvanized, steel pipes (pin piles) may be used to support the new structure. Three, four, and six-inch diameter pin piles are typically installed using small hammers mounted on a small excavator.

***Pin Pile Capacity*** - The number of piles required depends on the magnitude of the design load. Allowable axial compression capacities of 6, 10, and 15 tons may be used for the 3-, 4-, and 6-inch diameter pin piles, respectively, with an approximate factor of safety of 2 for piles driven to refusal. Penetration resistance required to achieve the (refusal) capacities will be determined based on the hammer used to install the pile. Tensile capacity of pin piles should be ignored in design calculations.

It is our experience that the driven pipe pile foundations should provide adequate support with total settlements on the order of ½-inch or less.

The criterion for driving refusal is defined as the minimum amount of time (in seconds) required to achieve one inch of penetration, and it varies with the size of hammer used for pile driving. For 3-, 4-, and 6-inch pin piles, the following table is a summary of driving refusal criteria for different hammer sizes that are commonly used:

**Summary of Commonly-Accepted Driving Criteria for 3-, 4-, and 6-inch Pin Pile  
with a 6, 10, and 15-ton Allowable Axial Compression Load**

<b>Hammer Model</b>	<b>Hammer Weight (lb) / Blows per minute</b>	<b>3" Pile Refusal Criteria (seconds per inch of penetration)</b>	<b>4" Pile Refusal Criteria (seconds per inch of penetration)</b>	<b>6" Pile Refusal Criteria (seconds per inch of penetration)</b>
Hydraulic TB 325	850 / 900	10	16	
Hydraulic TB 425	1,100 / 900	6	10	20
Hydraulic TB 725X	2,000 / 600	3	4	10
Hydraulic TB 830X	3,000 / 500			6

Please note that these refusal criteria were established empirically based on previous load tests on 3-, 4-, and 6-inch pin piles. Contractors may select a different hammer for driving these piles, and propose a different driving criterion. In this case, it is the contractor’s responsibility to demonstrate to the Engineer’s satisfaction that the design load can be achieved based on their selected equipment and driving criteria.

***Pin Pile Specifications*** - We recommend that the following specifications be included on the foundation plan:

1. All piles should consist of galvanized Schedule-40, ASTM A-53 Grade “A” pipe.
2. All piles shall be driven to refusal (see above table).
3. Piles shall be driven in nominal sections and connected with compression fitted sleeve couplers (i.e. no welding of pipe segments).
4. The geotechnical engineer of record or his/her representative shall observe pin pile installation.

The quality of a pin pile foundation is dependent, in part, on the experience and professionalism of the installation company. We recommend that a company with experienced personnel be selected to install the piles.

***Lateral Forces*** - The capacity of pin pipes to resist lateral loads is very limited and should not be used in design. Therefore, lateral forces from wind or seismic loading should be resisted by the passive earth pressures acting against the pile caps and below-grade walls or from battered piles (batter no steeper than 3(H):12(V)). ***Friction at the base of pile-supported concrete grade beam should be ignored in the design calculations.*** Passive resistance values may be determined using an equivalent fluid weight of 400 pounds per cubic foot (pcf). This value includes a safety factor of about 1.5 assuming that properly compacted granular fill will be placed adjacent to and surrounding the pile caps and grade beams.

***Grade Beam/Pile Cap Embedment*** - We recommend that the base of perimeter grade beams extend at least 18 inches below the adjacent exterior ground surface and that the base of interior grade beams extend at least 12 inches below interior floor slabs.

***Estimated Pile Length*** – The subsurface conditions at the site will likely vary substantially across the site. Based on the soil conditions at the site and our experience in the project area, for planning and cost estimating purposes, we estimate that pile length may range from about 10 to 20 feet.

#### **PERIMETER FOOTING DRAIN AND INTERCEPTOR TRENCH DRAIN**

Perimeter drains should be installed around buildings at or just below the invert of the footing or pile caps. Under no circumstances should roof downspout drain lines be connected to the footing drain systems. Roof downspouts must be separately tightlined to appropriate discharge locations. Cleanouts should be installed at strategic locations to allow for periodic maintenance of the footing drain and downspout tightline systems.

#### **CONCRETE SLAB-ON-GRADE**

In our opinion, conventional slab-on-grade construction may be utilized for the floor slabs. All soil beneath the floor slabs should be compacted to a dense and unyielding condition prior to placing capillary break material for the floor slabs. On-site soils that cannot be compacted to a dense and unyielding condition should be removed and replaced with compacted structural fill.

Slab-on-grade floors should be underlain by a capillary break consisting of at least of 4 inches of ¾-inch, clean crushed rock (less than 3 percent fines) compacted to a firm and unyielding condition. The capillary break should be placed on subgrade that has been compacted to a dense and unyielding condition. The capillary break should be placed on a suitable subgrade as confirmed by PanGEO. A 10-mil polyethylene vapor barrier should also be placed directly below the slab. We also recommend that control joints be incorporated into the floor slab to control cracking.

### **RETAINING AND BASEMENT WALL DESIGN PARAMETERS**

Retaining and basement walls should be properly designed to resist the lateral earth pressures exerted by the soils behind the wall. Proper drainage provisions should also be provided behind the walls to intercept and remove groundwater that may be present behind the wall. Our geotechnical recommendations for the design and construction of the retaining/below-grade walls are presented below.

#### ***Lateral Earth Pressures***

Concrete cantilever walls should be designed for an active pressure of 35 pcf for level backfills behind the walls assuming the walls are free to rotate or for an equivalent fluid weight of 50 pcf for rigid or unyielding walls. Walls with a 1(H):1(V) backslope should be designed for an active equivalent fluid weight of 45 pcf. Permanent walls should be designed for an additional uniform lateral pressure of 6H psf for seismic loading, where H corresponds to the buried depth of the wall. These recommendations assume that the wall backfill will consist of a free draining and properly compacted fill with adequate drainage provisions.

#### ***Surcharge***

Surcharge loads, where present, should also be included in the design of retaining walls. We recommend that a lateral load coefficient of 0.3 be used to compute the lateral pressure on the wall face resulting from surcharge loads located within a horizontal distance of one-half wall height.

#### ***Lateral Resistance***

Lateral forces from seismic loading and unbalanced lateral earth pressures may be resisted by a combination of passive earth pressures acting against the embedded portions of the foundations



and by friction acting on the base of the footings. Passive resistance values may be determined using an equivalent fluid weight of 400 pcf. This value includes a factor of safety of 1.5, assuming the footing is poured against dense native sand, re-compacted on-site sandy soil or properly compacted structural fill adjacent to the sides of footing. A friction coefficient of 0.5 may be used to determine the frictional resistance at the base of the footings. The coefficient includes a factor safety of 1.5.

### ***Wall Drainage***

Provisions for wall drainage should consist of a 4-inch diameter perforated drainpipe behind and at the base of the wall footings, embedded in 12 to 18 inches of clean crushed rock and pea gravel wrapped with a layer of filter fabric. We recommend a composite drainage material, such as Miradrain 6000, be used for drainage on exterior walls. The drainpipe at the base of the wall should be graded to direct water to a suitable outlet.

### ***Wall Backfill***

In our opinion, imported structural fill should be used for wall backfill, and should consist of granular material, such as WSDOT Gravel Borrow or approved equivalent. In areas where the space is limited between the wall and the face of excavation clean crushed rock may be used as backfill without compaction.

Wall backfill should be moisture conditioned to within about 3 percent of optimum moisture content, placed in loose, horizontal lifts less than 8 inches in thickness, and systematically compacted to a dense and relatively unyielding condition and to at least 95 percent of the maximum dry density, as determined using test method ASTM D 1557. Within 5 feet of the wall, the backfill should be compacted with hand-operated equipment to at least 90 percent of the maximum dry density.

### **PARCEL 30214059001 ACCESS**

Preliminary concept for driveway access to the parcel 30214059001 indicates a plan to construct a driveway from SE64th Street, as shown on Figure 2. This would require traversing a slope that is up to 1H:1V in places, especially at the top, and the slope is designated a steep slope hazard by the City of Mercer Island. In our opinion, the proposed driveway would require a soldier pile wall for support, would have a gradient of some 25 percent, and have poor sight distances with

SE64th Street. Construction would require an easement from the New Hope Church to cross a portion of their property, and also an easement from the City of Mercer Island. Existing overhead utilities would have to be temporarily relocated.

Alternatively, a partially developed pathway may be used for access along the north property line of the house at 6423 E Mercer Way and enters the property along the ridgeline from the southeast. This alignment could be developed into a driveway relatively easily and would have a gradient of roughly 10 to 12 percent.

From above, a driveway access could be developed beginning at the northwest corner of the property at 9185 SE 64<sup>th</sup> Street and trending east across the slope to enter the subject property at the northwest corner. This alignment would require permanent easements from the New Hope Church and from property owner of 9185 SE 64<sup>th</sup> Street. However, the driveway cut starts 10 to 12 feet below the start elevation of the preliminary alignment, and construction could take advantage of a naturally occurring bench on the hillside.

## **CONSTRUCTION CONSIDERATIONS**

### **SITE PREPARATION**

Site preparation for the proposed project mainly includes site clearing and excavations to the design subgrade. All debris resulted from site clearing should be hauled away from the site. The stripped surface soil materials should be properly disposed off-site or be “wasted” on site in non-structural landscaping areas.

Following site clearing and excavations, the adequacy of the subgrade should be verified by a representative of PanGEO. Areas of weak soil may require over-excavation and replacement with compacted structural fill or lean-mix concrete.

### **TEMPORARY EXCAVATIONS**

Planning for the individual sites is not well advanced, so the depth of excavations, if any, is currently unknown. We anticipate most excavations will mainly encounter loose to medium dense silty sand and soft silt and/or clay. All temporary excavations should be performed in accordance with Part N of WAC (Washington Administrative Code) 296-155. The contractor is responsible for maintaining safe excavation slopes and/or shoring.

Based on anticipated soil conditions temporary excavations may be sloped at 1(H):1(V). However, the temporary excavations and cut slopes should be re-evaluated in the field during construction and may require modifications in the wet season. The cut slopes should be covered with plastic sheets in the wet season. We also recommend that heavy construction equipment, building materials, excavated soil, and vehicular traffic should not be allowed within a distance equal to 1/3 the slope height from the top of any excavation.

### **PERMANENT CUT AND FILL SLOPES**

Based on the soil conditions underlying the site, we recommend permanent cut and fill slopes be constructed no steeper than 2(H):1(V).

### **MATERIAL REUSE**

In the context of this report, structural fill is defined as compacted fill placed under footings, concrete stairs and landings, and slabs, or other load-bearing areas. In our opinion, the on-site soil is not suitable as structural fill. The structural fill should consist of imported, well-graded, granular material, such as WSDOT Gravel Borrow (WSDOT 9-03.14(1)) or approved equivalent. The on-site fill may be used as general fill in the non-structural and landscaping areas. If use of the on-site soil is planned, the excavated soil should be stockpiled and protected with plastic sheeting to prevent softening from rainfall in the wet season.

### **STRUCTURAL FILL PLACEMENT AND COMPACTION**

Structural fill should be moisture conditioned to within about 3 percent of optimum moisture content, placed in loose, horizontal lifts less than 8 inches in thickness, and systematically compacted to a dense and relatively unyielding condition and to at least 95 percent of the maximum dry density, as determined using test method ASTM D 1557.

Depending on the type of compaction equipment used and depending on the type of fill material, it may be necessary to decrease the thickness of each lift to achieve adequate compaction. PanGEO can provide additional recommendations regarding structural fill and compaction during construction.

### **WET WEATHER EARTHWORK**

In our opinion, the construction at the proposed sites may be accomplished during wet weather without adversely affecting the site stability. However, earthwork construction performed during the drier summer months will likely be more economical. The properties underlain by pre-Olympia fines grained deposits could become especially difficult should the clay soils become disturbed and saturated. Winter construction will require the implementation of best management erosion and sedimentation control practices to reduce the risk of off-site sediment transport. Most of the site soils within the anticipated depth of excavation contain a high percentage of fines and are moisture sensitive. Any footing subgrade soils that become softened either by disturbance, groundwater or rainfall should be removed and replaced with structural fill, Controlled Density Fill (CDF), or lean-mix concrete.

General recommendations relative to earthwork performed in wet conditions are presented below:

- Site stripping, excavation and subgrade preparation should be followed promptly by the placement and compaction of clean structural fill or CDF;
- The size and type of construction equipment used may have to be limited to prevent soil disturbance;
- The ground surface within the construction area should be graded to promote run-off of surface water and to prevent the ponding of water;
- Geotextile silt fences and bales of straw should be strategically located to control erosion and the movement of soil;
- Structural fill should consist of less than 5% fines; and
- Excavation slopes should be covered with plastic sheets.

### **SURFACE DRAINAGE CONSIDERATIONS**

Surface runoff can be controlled during construction by careful grading practices. Typically, this includes the construction of shallow, upgrade perimeter ditches or low earthen berms in conjunction with silt fences to collect runoff and prevent water from entering excavations or to prevent runoff from the construction area from leaving the immediate work site.

Permanent control of surface water should be incorporated in the final grading design. Adequate surface gradients and drainage systems should be incorporated into the design such that surface runoff is directed away from slopes and structures. Water from roof drains and other impervious areas should be properly collected and discharged into a storm drain system, and should not be discharged on to the slope areas.

### **ADDITIONAL SERVICES**

To confirm that our recommendations are properly incorporated into the design and construction of the proposed development, PanGEO should be retained to conduct a review of the final project plans and specifications, and to monitor the construction of geotechnical elements. The City of Mercer Island, as part of the permitting process, will also require geotechnical construction inspection services. PanGEO can provide you a cost estimate for construction monitoring services at a later date.

We anticipate that the following additional services will be required:

- Review final project plans and specifications
- Verify implementation of erosion control measures;
- Verify adequacy of footing subgrade;
- Monitor pin pile installation;
- Monitor temporary excavation;
- Monitor the installation of temporary and permanent soldier pile walls
- Verify the adequacy of subsurface drainage installation;
- Confirm the adequacy of the compaction of structural backfill; and
- Other consultation as may be required during construction

Modifications to our recommendations presented in this report may be necessary, based on the actual conditions encountered during construction.

## CLOSURE

We have prepared this report for Benjamin C. Altman, Exe., George Steirer and the project design team. Recommendations contained in this report are based on a site reconnaissance, a subsurface exploration program, review of pertinent subsurface information, and our understanding of the project. The study was performed using a mutually agreed-upon scope of work.

Variations in soil conditions may exist between the locations of the explorations and the actual conditions underlying the site. The nature and extent of soil variations may not be evident until construction occurs. If any soil conditions are encountered at the site that are different from those described in this report, we should be notified immediately to review the applicability of our recommendations. Additionally, we should also be notified to review the applicability of our recommendations if there are any changes in the project scope.

The scope of our work does not include services related to construction safety precautions. Our recommendations are not intended to direct the contractors' methods, techniques, sequences or procedures, except as specifically described in our report for consideration in design. Additionally, the scope of our work specifically excludes the assessment of environmental characteristics, particularly those involving hazardous substances. We are not mold consultants nor are our recommendations to be interpreted as being preventative of mold development. A mold specialist should be consulted for all mold-related issues.

This report has been prepared for planning and design purposes for specific application to the proposed project in accordance with the generally accepted standards of local practice at the time this report was written. No warranty, express or implied, is made.

This report may be used only by the client and for the purposes stated, within a reasonable time from its issuance. Land use, site conditions (both off and on-site), or other factors including advances in our understanding of applied science, may change over time and could materially affect our findings. Therefore, this report should not be relied upon after 24 months from its issuance. PanGEO should be notified if the project is delayed by more than 24 months from the date of this report so that we may review the applicability of our conclusions considering the time lapse.

It is the client's responsibility to see that all parties to this project, including the designer, contractor, subcontractors, etc., are made aware of this report in its entirety. The use of information contained in this report for bidding purposes should be done at the contractor's option and risk. Any party other than the client who wishes to use this report shall notify PanGEO of such intended use and for permission to copy this report. Based on the intended use of the report, PanGEO may require that additional work be performed and that an updated report be reissued. Noncompliance with any of these requirements will release PanGEO from any liability resulting from the use this report.

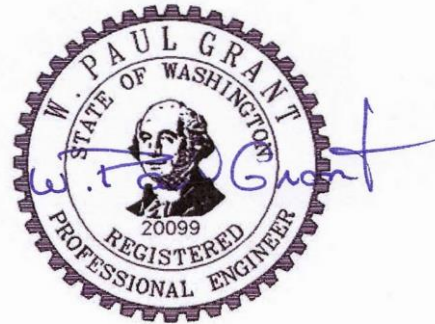
We appreciate the opportunity to be of service.

Sincerely,



*Stephen H. Evans*

Stephen H. Evans, L.E.G.  
Senior Engineering Geologist



W. Paul Grant, P.E.  
Principal Geotechnical Engineer

**Enclosures:**

Figure 1: Vicinity Map

Figure 2: Project Overview and Boring Locations

Figure 3a: Site and Exploration Plan, Lot 302405-9151

Figure 3b: Site and Exploration Plan, Lot 302405-9001

Figure 3c: Site and Exploration Plan, Lot 302405-9213 (9167 SE 64<sup>th</sup> Street)

Appendix A: PanGEO and AMEC Boring Logs

## REFERENCES

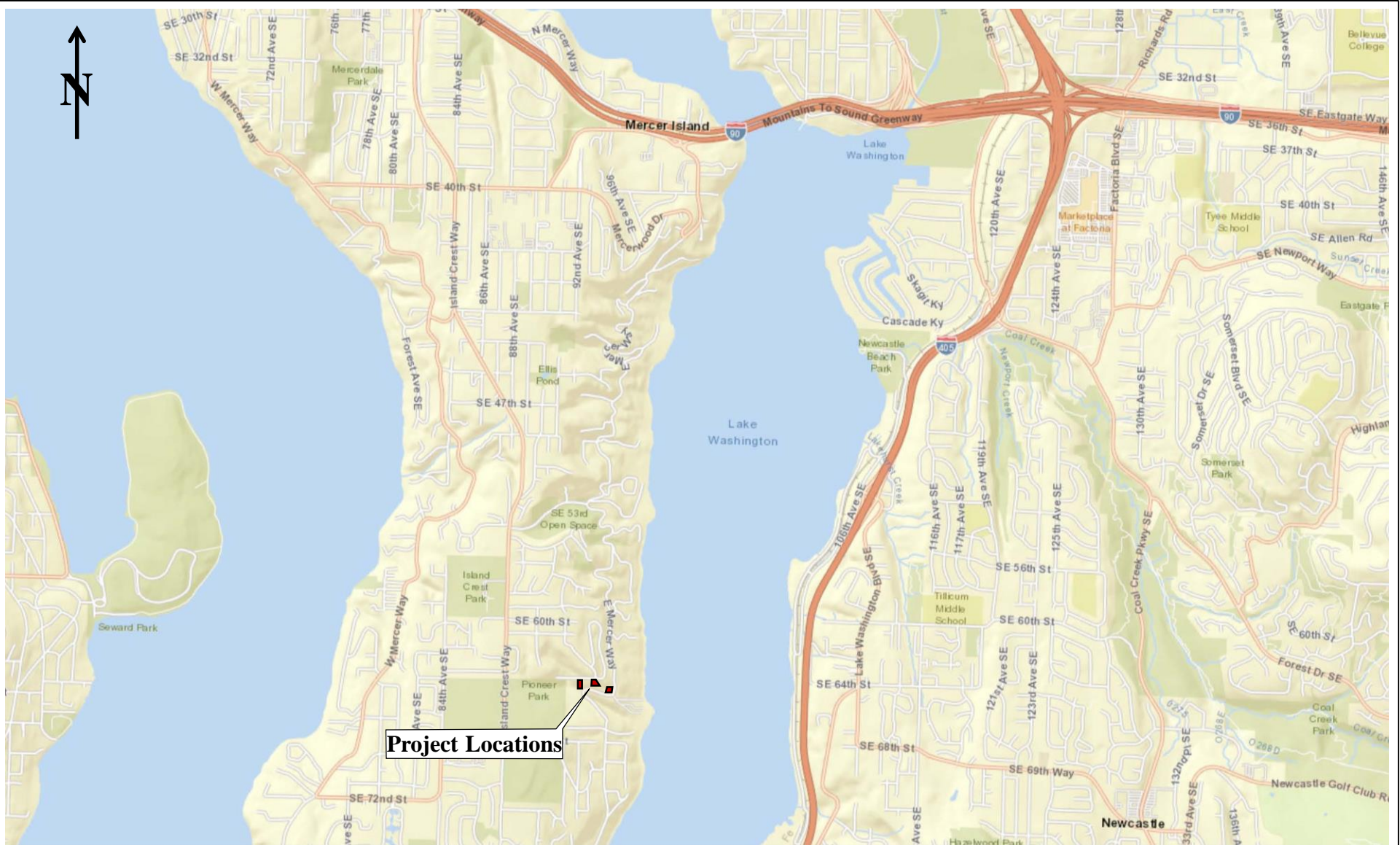
AMEC Earth & Environmental, July 3, 2001, *Geotechnical Engineering Report, Proposed Single Family Residence, 46xx S.E. 64<sup>th</sup> Street, Mercer Island, Washington*, a report for JDW Homes, LLC, 4740 E. Mercer Way, Mercer Island, Washington.

International Code Council, 2015, *International Building Code (IBC)*.

Troost, K.G., and Wisher, A. P, 2006. *Geologic Map of Mercer Island, Washington, scale 1:24,000*.

WSDOT, 2018, *Standard Specifications for Road, Bridge and Municipal Construction, M 41-10*.





Map not to Scale  
 Base Map from  
 Dept of Natural  
 Resources Geological  
 Information Portal



**Proposed Development  
 6423 East Mercer Way  
 Mercer Island, WA**

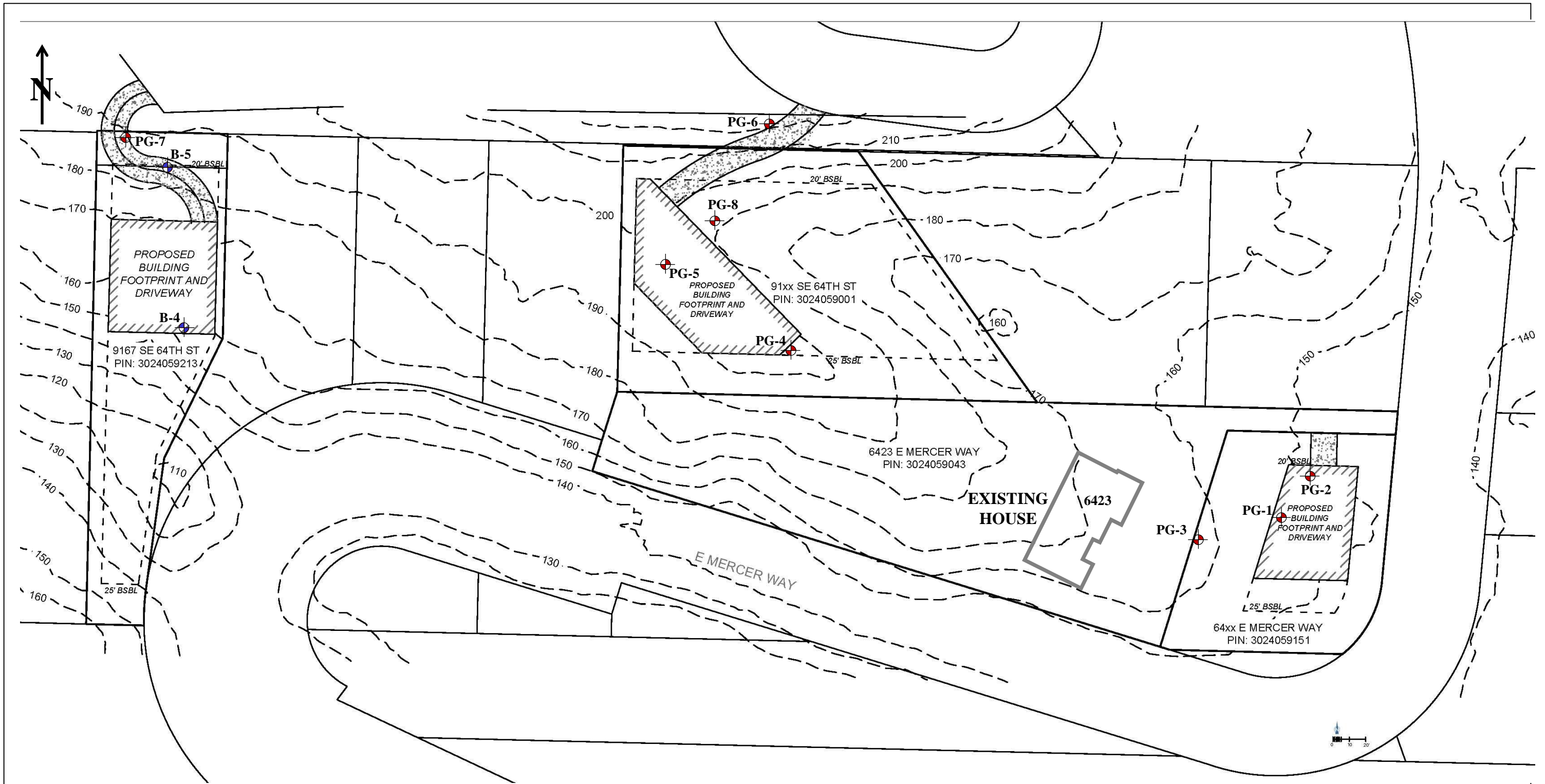
**VICINITY MAP**

Project No.

19-062

Figure No.

1



Not to Scale

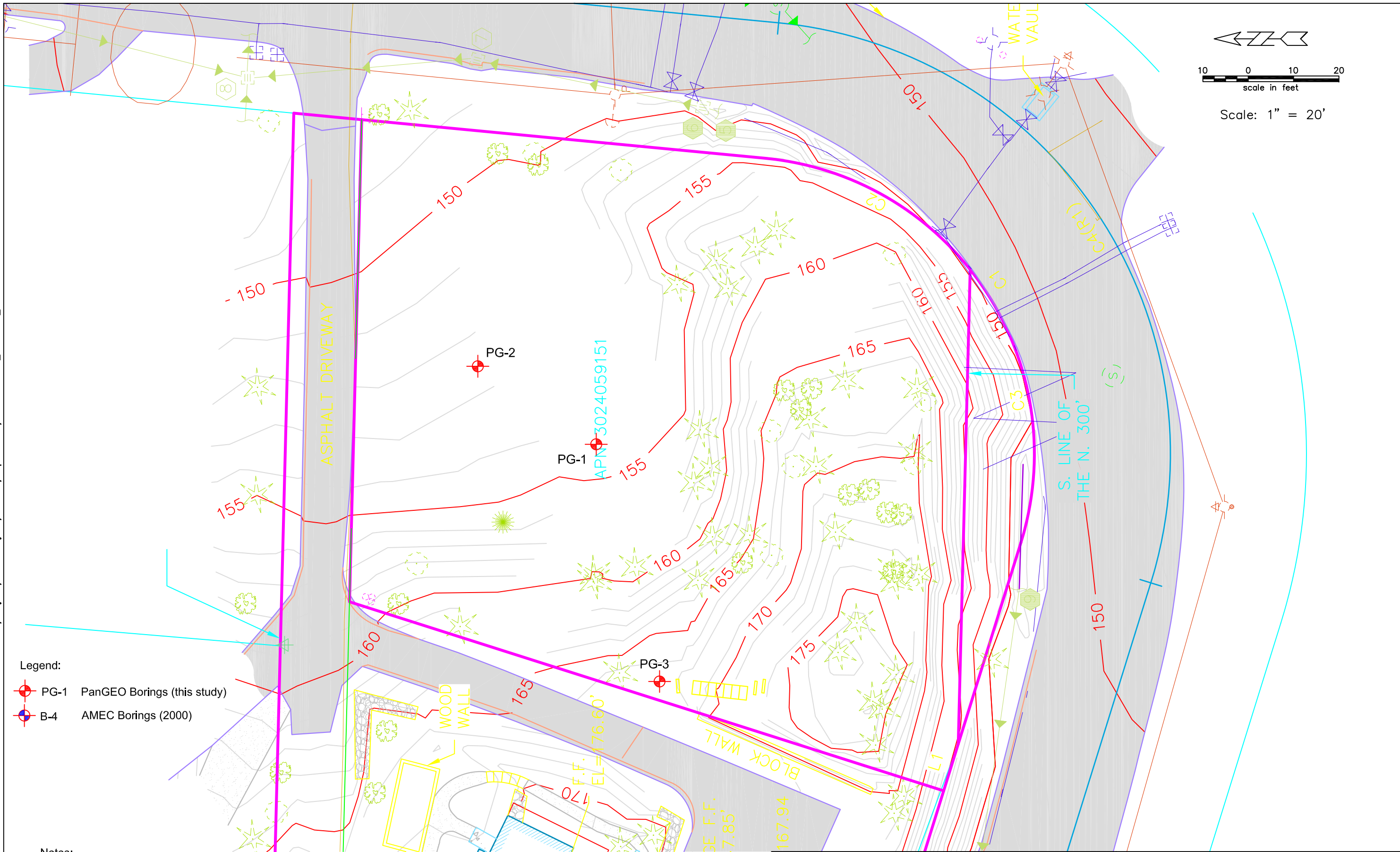
**Legend:**

- PanGEO Boring
- AMEC Boring

File.ppt 5/17/2019(10:12 AM) TEA

	<b>Proposed Development</b> 6423 E Mercer Way Mercer Island, WA	<b>PROJECT OVERVIEW AND BORING LOCATIONS</b>	
		Project No. 19-062	Figure No. 2

DRAWN BY: SHE CHECKED BY: WPG DATE: 05.09.19 Z:/Projects/2019 Projects/19-062/Exploration/Plant-190204\_19-2-25\_2013



- Legend:**
- PG-1 PanGEO Borings (this study)
  - B-4 AMEC Borings (2000)

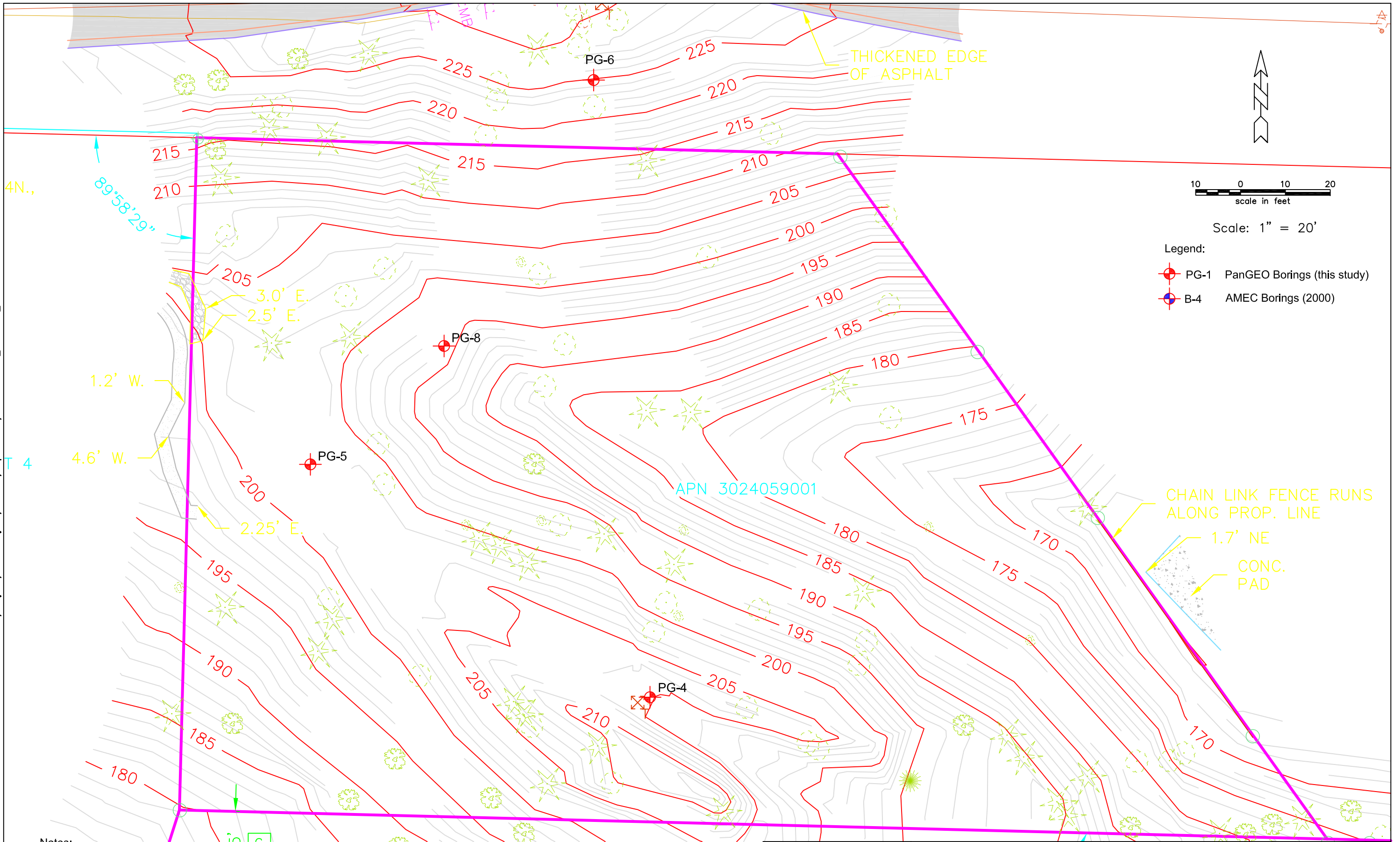
- Notes:**
1. Base map provided by Plan to Permit, May, 2019. Elevations are based on the NAVD88 datum.
  2. Boring logs for PanGEO borings PG-1 through PG-8 are located in Appendix A. Locations for these borings are approximate and based on the relative locations of known site features.
  3. Boring logs for historic investigations are located in Appendix B.



Proposed 3-Lot Development  
6423 East Mercer Way  
Mercer Island, Washington

<b>SITE AND EXPLORATION PLAN</b>	
LOT 3024059151	
PROJECT NO.	19-063
FIGURE NO.	3a

DRAWN BY: SHE  
CHECKED BY: WPG  
DATE: 05.09.19  
Z:/Projects/2019 Projects/19-062/Exploration/Plant-190204\_19-2-25\_2013



Notes:

1. Base map provided by Plan to Permit, May, 2019. Elevations are based on the NAVD88 datum.
2. Boring logs for PanGEO borings PG-1 through PG-8 are located in Appendix A. Locations for these borings are approximate and based on the relative locations of known site features.
3. Boring logs for historic investigations are located in Appendix B.



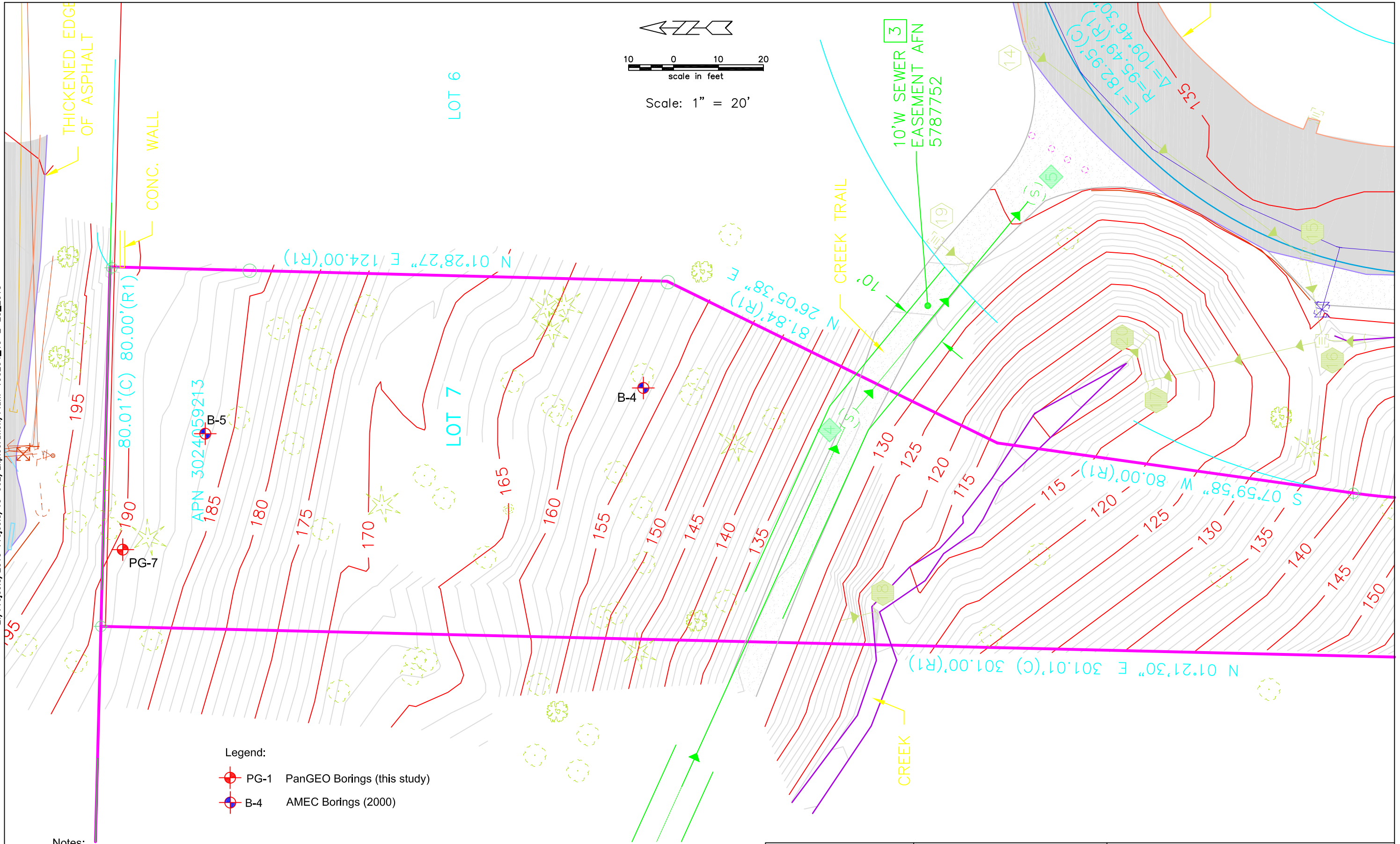
Proposed 3-Lot Development  
6423 East Mercer Way  
Mercer Island, Washington

SITE AND EXPLORATION PLAN  
LOT 3024059001

PROJECT NO. 19-063

FIGURE NO. 3b

DRAWN BY: SHE  
CHECKED BY: WPG  
DATE: 05.09.19  
Z:/Projects/2019 Projects/19-062/Exploration/Plant-190204\_19-2-25\_2013



Notes:

1. Base map provided by Plan to Permit, May, 2019. Elevations are based on the NAVD88 datum.
2. Boring logs for PanGEO borings PG-1 through PG-8 are located in Appendix A. Locations for these borings are approximate and based on the relative locations of known site features.
3. Boring logs for historic investigations are located in Appendix B.

- Legend:
- PG-1 PanGEO Borings (this study)
  - B-4 AMEC Borings (2000)

	Proposed 3-Lot Development 6423 East Mercer Way Mercer Island, Washington		SITE AND EXPLORATION PLAN LOT 3024059213	
	PROJECT NO. 19-063	FIGURE NO. 3c		

## **APPENDIX A**

### **SUMMARY TEST BORING LOGS**

## RELATIVE DENSITY / CONSISTENCY

SAND / GRAVEL			SILT / CLAY		
Density	SPT N-values	Approx. Relative Density (%)	Consistency	SPT N-values	Approx. Undrained Shear Strength (psf)
Very Loose	<4	<15	Very Soft	<2	<250
Loose	4 to 10	15 - 35	Soft	2 to 4	250 - 500
Med. Dense	10 to 30	35 - 65	Med. Stiff	4 to 8	500 - 1000
Dense	30 to 50	65 - 85	Stiff	8 to 15	1000 - 2000
Very Dense	>50	85 - 100	Very Stiff	15 to 30	2000 - 4000
			Hard	>30	>4000

## UNIFIED SOIL CLASSIFICATION SYSTEM

MAJOR DIVISIONS		GROUP DESCRIPTIONS	
<b>Gravel</b> 50% or more of the coarse fraction retained on the #4 sieve. Use dual symbols (eg. GP-GM) for 5% to 12% fines.	GRAVEL (<5% fines)		GW: Well-graded GRAVEL
	GRAVEL (>12% fines)		GP: Poorly-graded GRAVEL
<b>Sand</b> 50% or more of the coarse fraction passing the #4 sieve. Use dual symbols (eg. SP-SM) for 5% to 12% fines.	SAND (<5% fines)		GM: Silty GRAVEL
	SAND (>12% fines)		GC: Clayey GRAVEL
			SW: Well-graded SAND
			SP: Poorly-graded SAND
<b>Silt and Clay</b> 50% or more passing #200 sieve	Liquid Limit < 50		SM: Silty SAND
			SC: Clayey SAND
			ML: SILT
	Liquid Limit > 50		CL: Lean CLAY
			OL: Organic SILT or CLAY
			MH: Elastic SILT
			CH: Fat CLAY
Highly Organic Soils			OH: Organic SILT or CLAY
			PT: PEAT

- Notes:**
- Soil exploration logs contain material descriptions based on visual observation and field tests using a system modified from the Uniform Soil Classification System (USCS). Where necessary laboratory tests have been conducted (as noted in the "Other Tests" column), unit descriptions may include a classification. Please refer to the discussions in the report text for a more complete description of the subsurface conditions.
  - The graphic symbols given above are not inclusive of all symbols that may appear on the borehole logs. Other symbols may be used where field observations indicated mixed soil constituents or dual constituent materials.

### DESCRIPTIONS OF SOIL STRUCTURES

<b>Layered:</b> Units of material distinguished by color and/or composition from material units above and below	<b>Fissured:</b> Breaks along defined planes
<b>Laminated:</b> Layers of soil typically 0.05 to 1mm thick, max. 1 cm	<b>Slickensided:</b> Fracture planes that are polished or glossy
<b>Lens:</b> Layer of soil that pinches out laterally	<b>Blocky:</b> Angular soil lumps that resist breakdown
<b>Interlayered:</b> Alternating layers of differing soil material	<b>Disrupted:</b> Soil that is broken and mixed
<b>Pocket:</b> Erratic, discontinuous deposit of limited extent	<b>Scattered:</b> Less than one per foot
<b>Homogeneous:</b> Soil with uniform color and composition throughout	<b>Numerous:</b> More than one per foot
	<b>BCN:</b> Angle between bedding plane and a plane normal to core axis

### COMPONENT DEFINITIONS

COMPONENT	SIZE / SIEVE RANGE	COMPONENT	SIZE / SIEVE RANGE
Boulder:	> 12 inches	Sand	
Cobbles:	3 to 12 inches	Coarse Sand:	#4 to #10 sieve (4.5 to 2.0 mm)
Gravel	3 to 3/4 inches	Medium Sand:	#10 to #40 sieve (2.0 to 0.42 mm)
		Fine Sand:	#40 to #200 sieve (0.42 to 0.074 mm)
Coarse Gravel:	3 to 3/4 inches	Silt	0.074 to 0.002 mm
Fine Gravel:	3/4 inches to #4 sieve	Clay	<0.002 mm

### TEST SYMBOLS

for In Situ and Laboratory Tests listed in "Other Tests" column.

ATT	Atterberg Limit Test
Comp	Compaction Tests
Con	Consolidation
DD	Dry Density
DS	Direct Shear
%F	Fines Content
GS	Grain Size
Perm	Permeability
PP	Pocket Penetrometer
R	R-value
SG	Specific Gravity
TV	Torvane
TXC	Triaxial Compression
UCC	Unconfined Compression

### SYMBOLS

Sample/In Situ test types and intervals

	2-inch OD Split Spoon, SPT (140-lb. hammer, 30" drop)
	3.25-inch OD Split Spoon (300-lb hammer, 30" drop)
	Non-standard penetration test (see boring log for details)
	Thin wall (Shelby) tube
	Grab
	Rock core
	Vane Shear

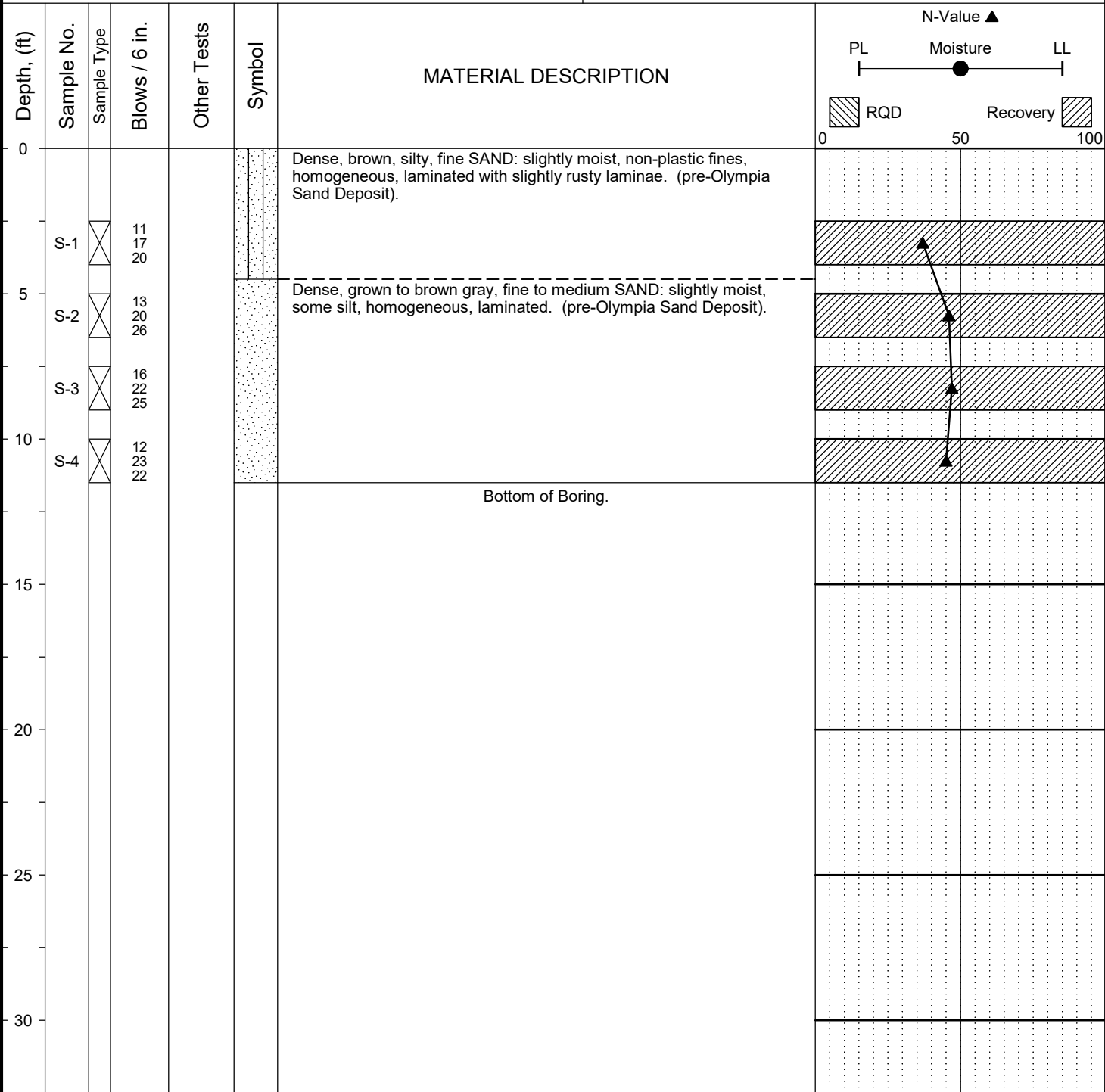
### MONITORING WELL

	Groundwater Level at time of drilling (ATD)
	Static Groundwater Level
	Cement / Concrete Seal
	Bentonite grout / seal
	Silica sand backfill
	Slotted tip
	Slough
	Bottom of Boring

### MOISTURE CONTENT

Dry	Dusty, dry to the touch
Moist	Damp but no visible water
Wet	Visible free water

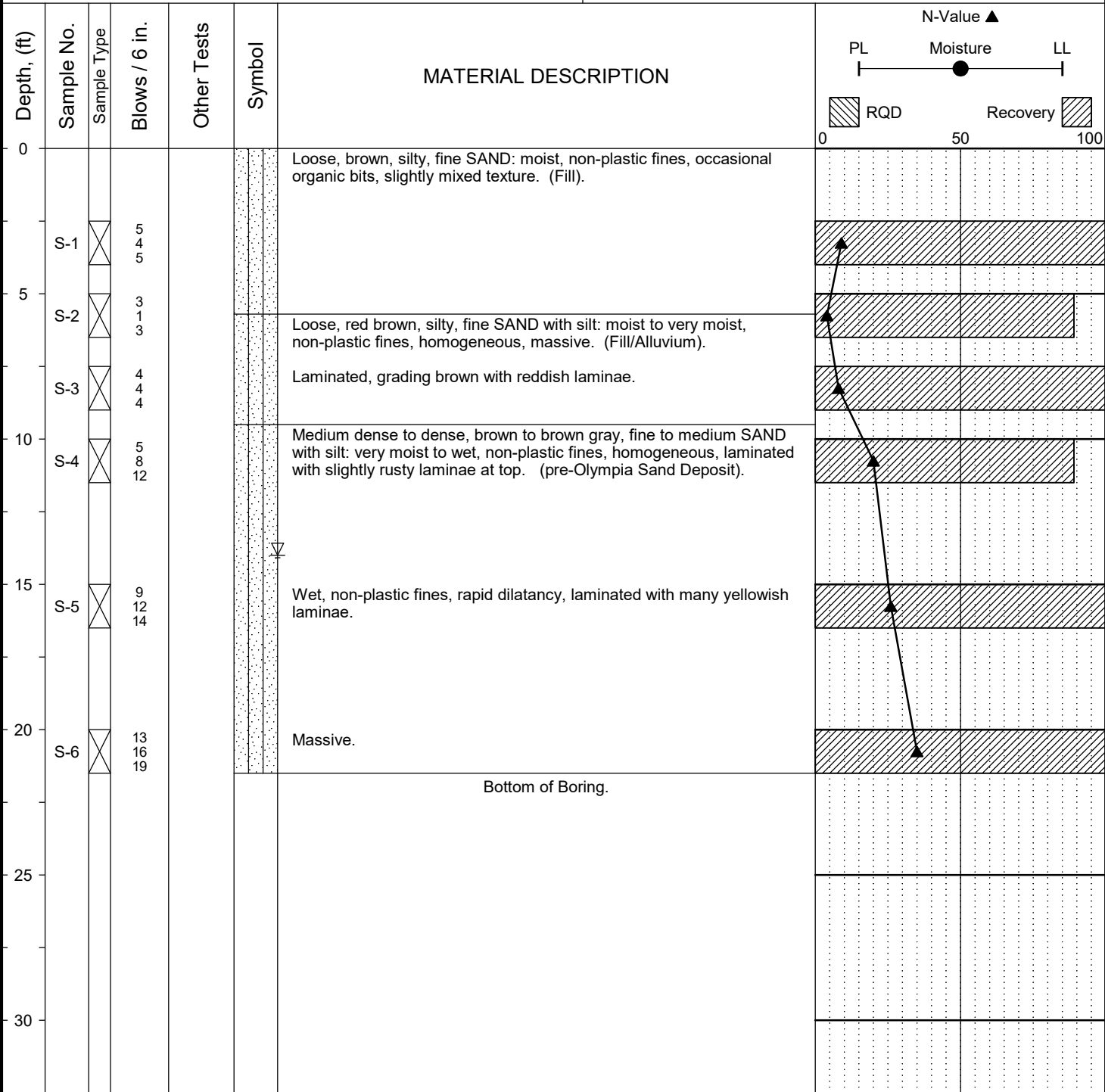
Project: Proposed Lot Development Job Number: 19-062 Location: 6423 East Mercer Way, Mercer Island, WA Coordinates: Northing: , Easting:	Surface Elevation: Top of Casing Elev.: Drilling Method: HSA Sampling Method: SPT
---	--



Completion Depth: 11.5ft Date Borehole Started: 3/7/19 Date Borehole Completed: 3/7/19 Logged By: S. Evans Drilling Company: Boretac, Inc	Remarks: No groundwater encountered during drilling.
---	--

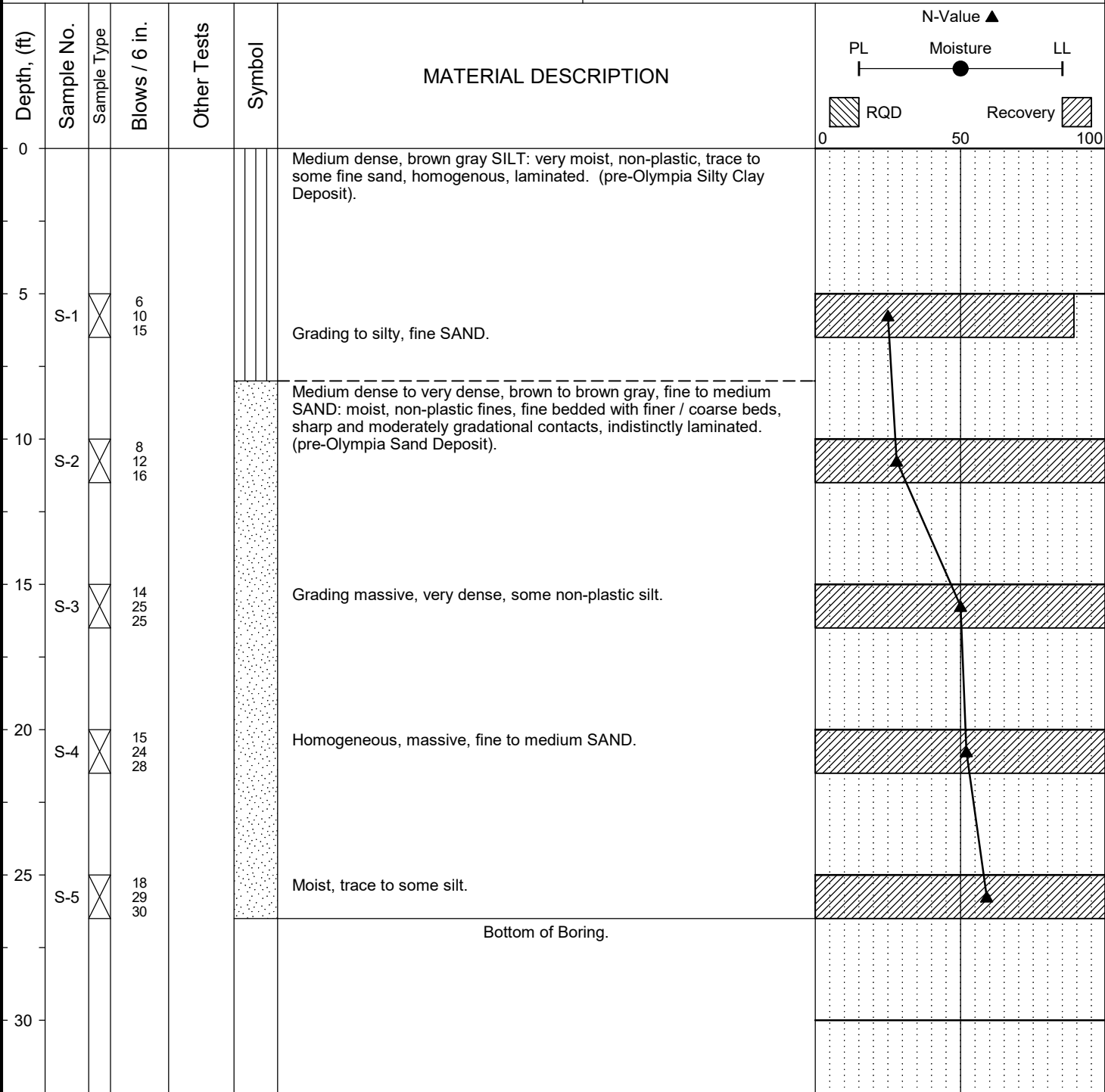


Project: Proposed Lot Development Job Number: 19-062 Location: 6423 East Mercer Way, Mercer Island, WA Coordinates: Northing: , Easting:	Surface Elevation: Top of Casing Elev.: Drilling Method: HSA Sampling Method: SPT
---	--



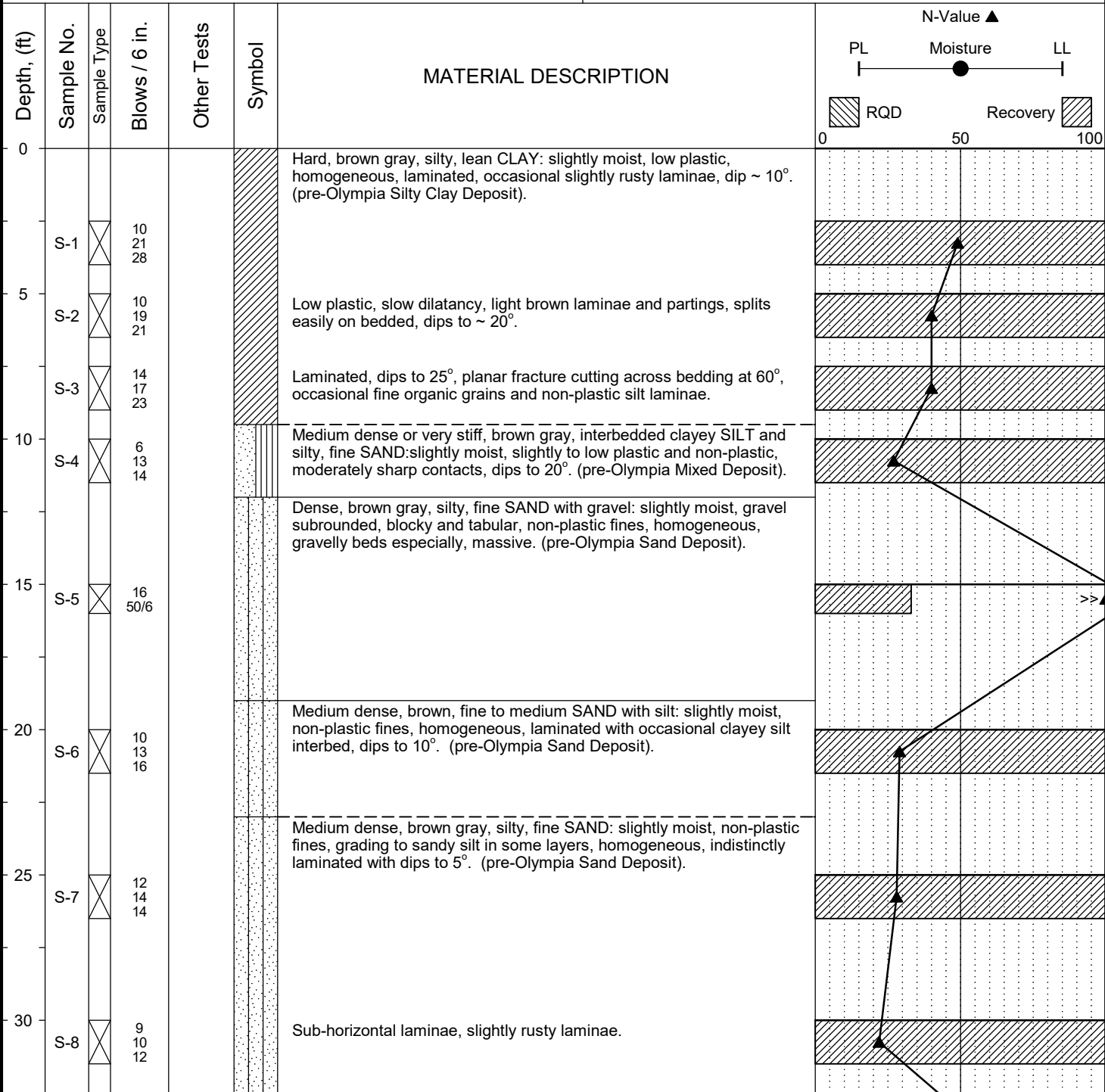
Completion Depth: 21.5ft Date Borehole Started: 3/7/19 Date Borehole Completed: 3/7/19 Logged By: S. Evans Drilling Company: Boretac, Inc	Remarks: Groundwater level estimated based on wetness of soil sample and water on the sampling rods.
---	--

Project: Proposed Lot Development Job Number: 19-062 Location: 6423 East Mercer Way, Mercer Island, WA Coordinates: Northing: , Easting:	Surface Elevation: Top of Casing Elev.: Drilling Method: HSA Sampling Method: SPT
---	--



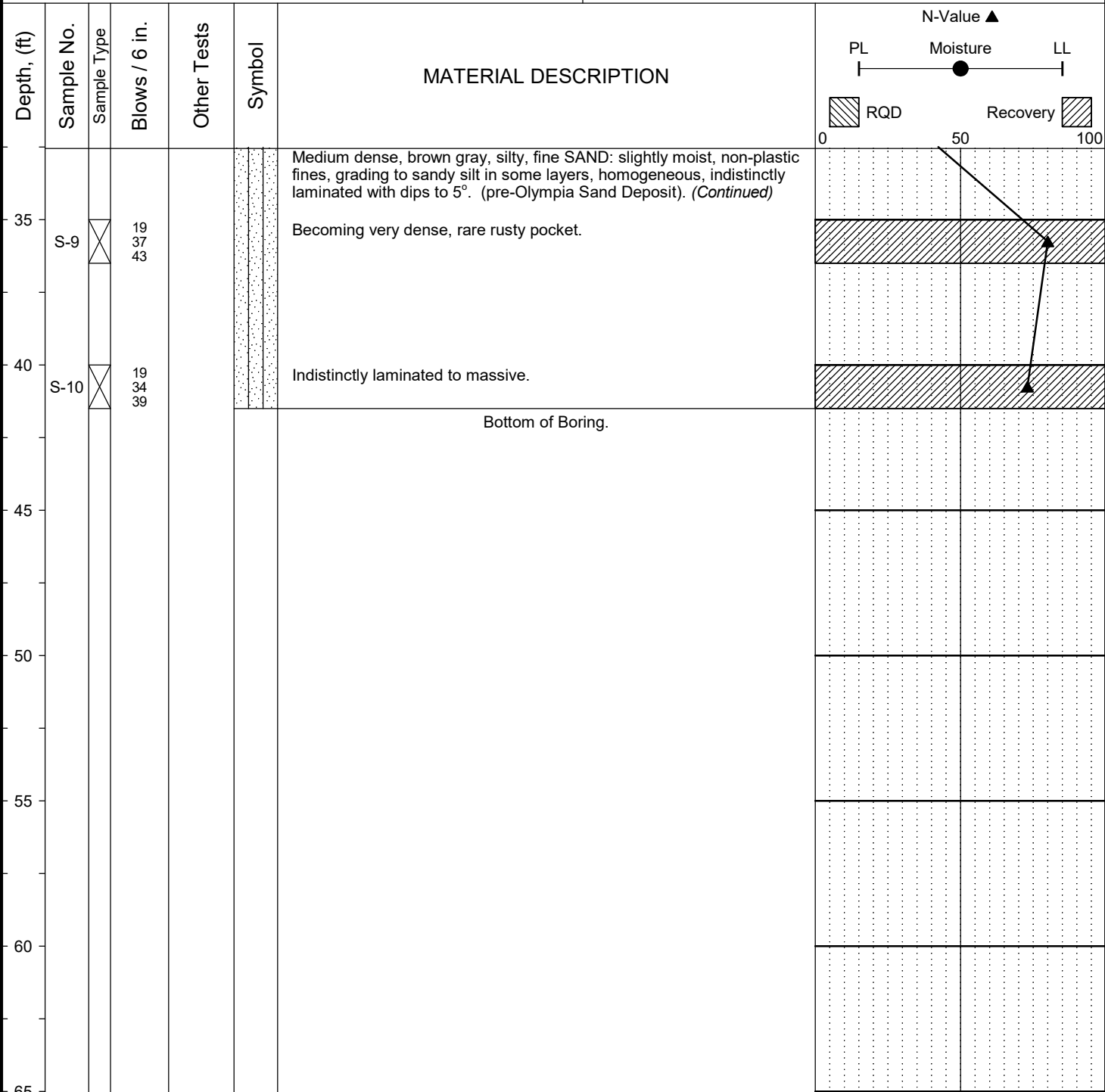
Completion Depth: 26.5ft Date Borehole Started: 3/7/19 Date Borehole Completed: 3/7/19 Logged By: S. Evans Drilling Company: Boretac, Inc	Remarks: No groundwater encountered during drilling.
---	--

Project: Proposed Lot Development Job Number: 19-062 Location: 6423 East Mercer Way, Mercer Island, WA Coordinates: Northing: , Easting:	Surface Elevation: Top of Casing Elev.: Drilling Method: HSA Sampling Method: SPT
---	--



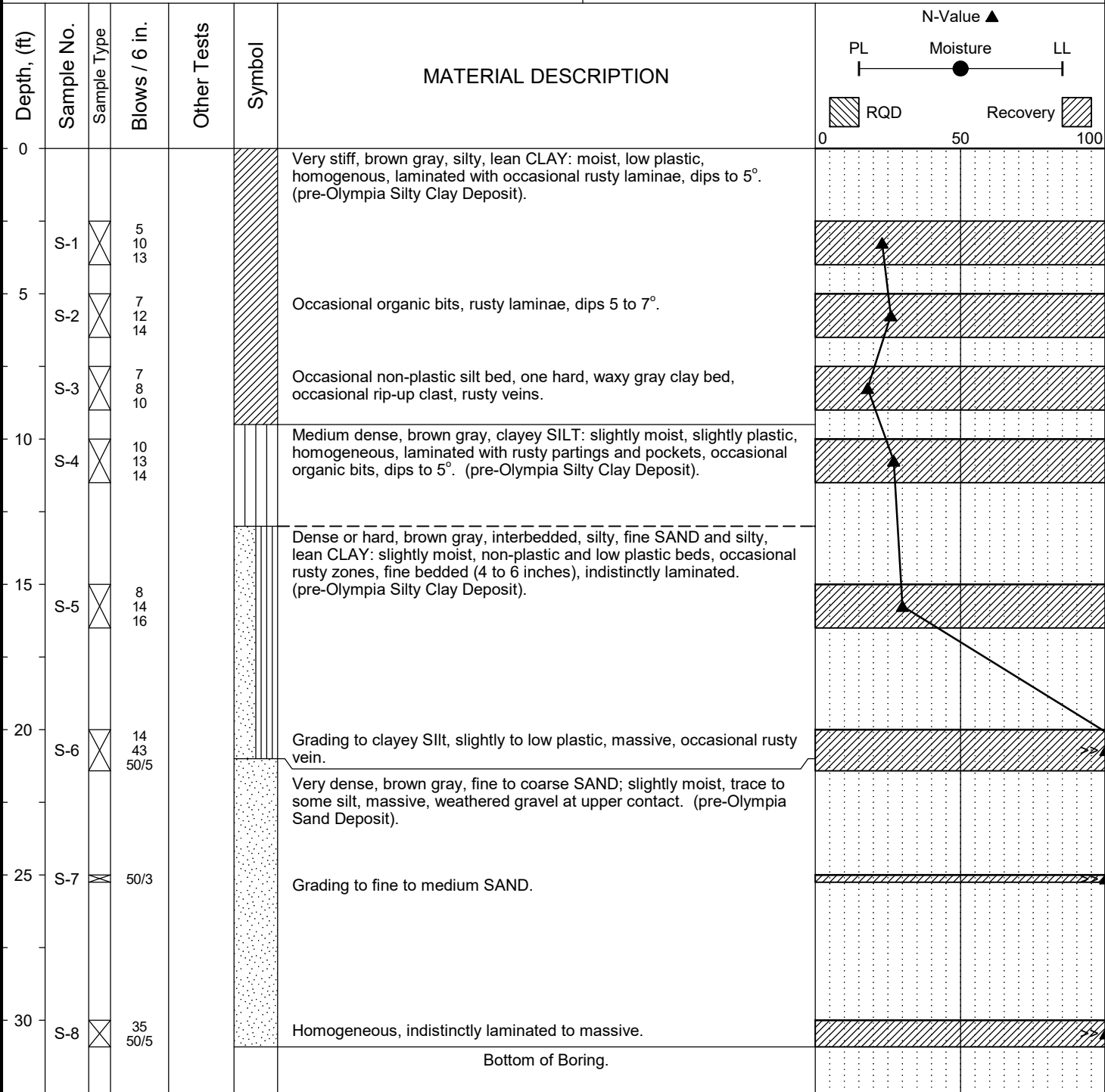
Completion Depth: 41.5ft Date Borehole Started: 3/7/19 Date Borehole Completed: 3/7/19 Logged By: S. Evans Drilling Company: Boretac, Inc	Remarks: No groundwater encountered during drilling.
---	--

Project: Proposed Lot Development Job Number: 19-062 Location: 6423 East Mercer Way, Mercer Island, WA Coordinates: Northing: , Easting:	Surface Elevation: Top of Casing Elev.: Drilling Method: HSA Sampling Method: SPT
---	--



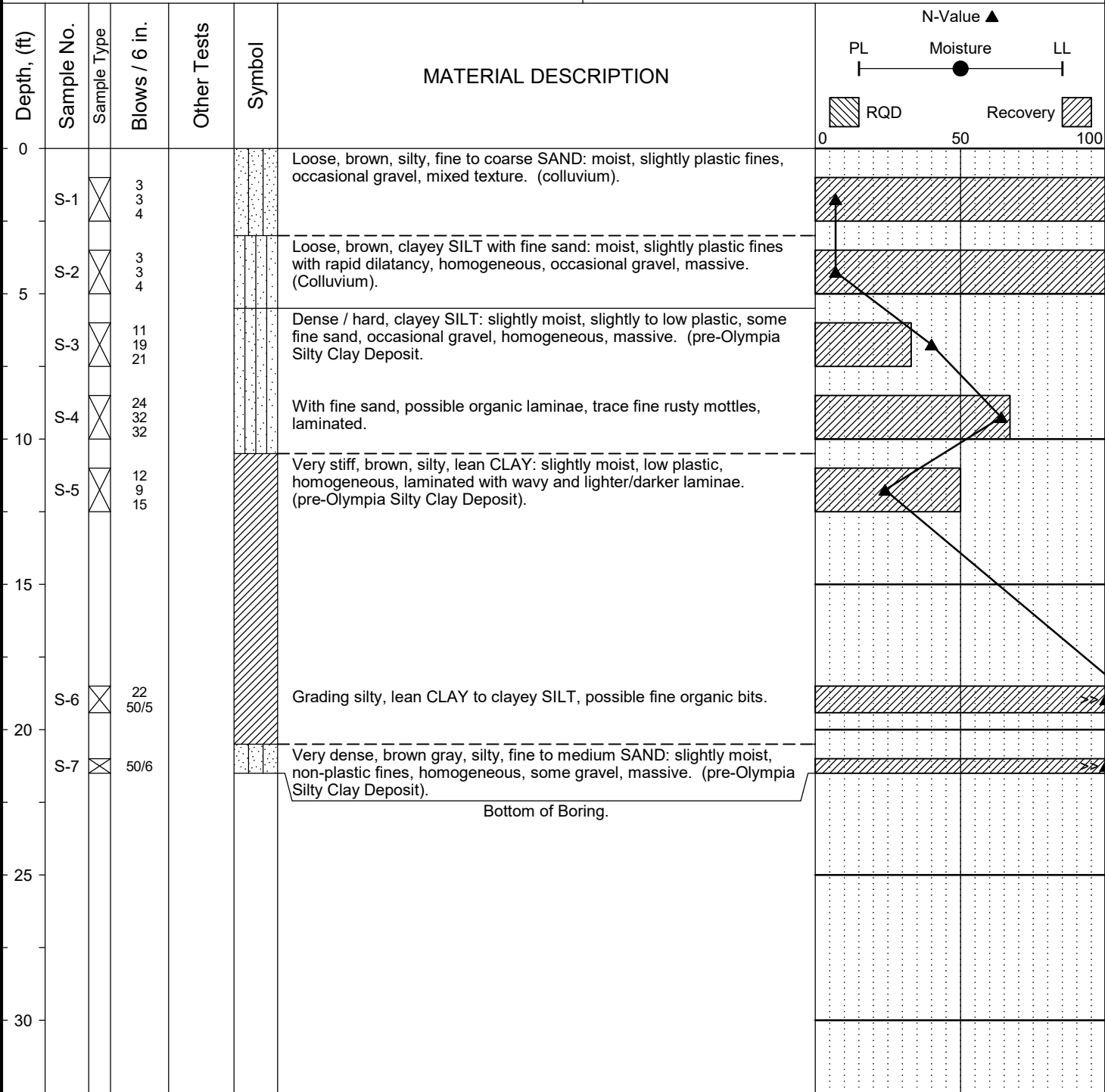
Completion Depth: 41.5ft Date Borehole Started: 3/7/19 Date Borehole Completed: 3/7/19 Logged By: S. Evans Drilling Company: Boretac, Inc	Remarks: No groundwater encountered during drilling.
---	--

Project: Proposed Lot Development Job Number: 19-062 Location: 6423 East Mercer Way, Mercer Island, WA Coordinates: Northing: , Easting:	Surface Elevation: Top of Casing Elev.: Drilling Method: HSA Sampling Method: SPT
---	--



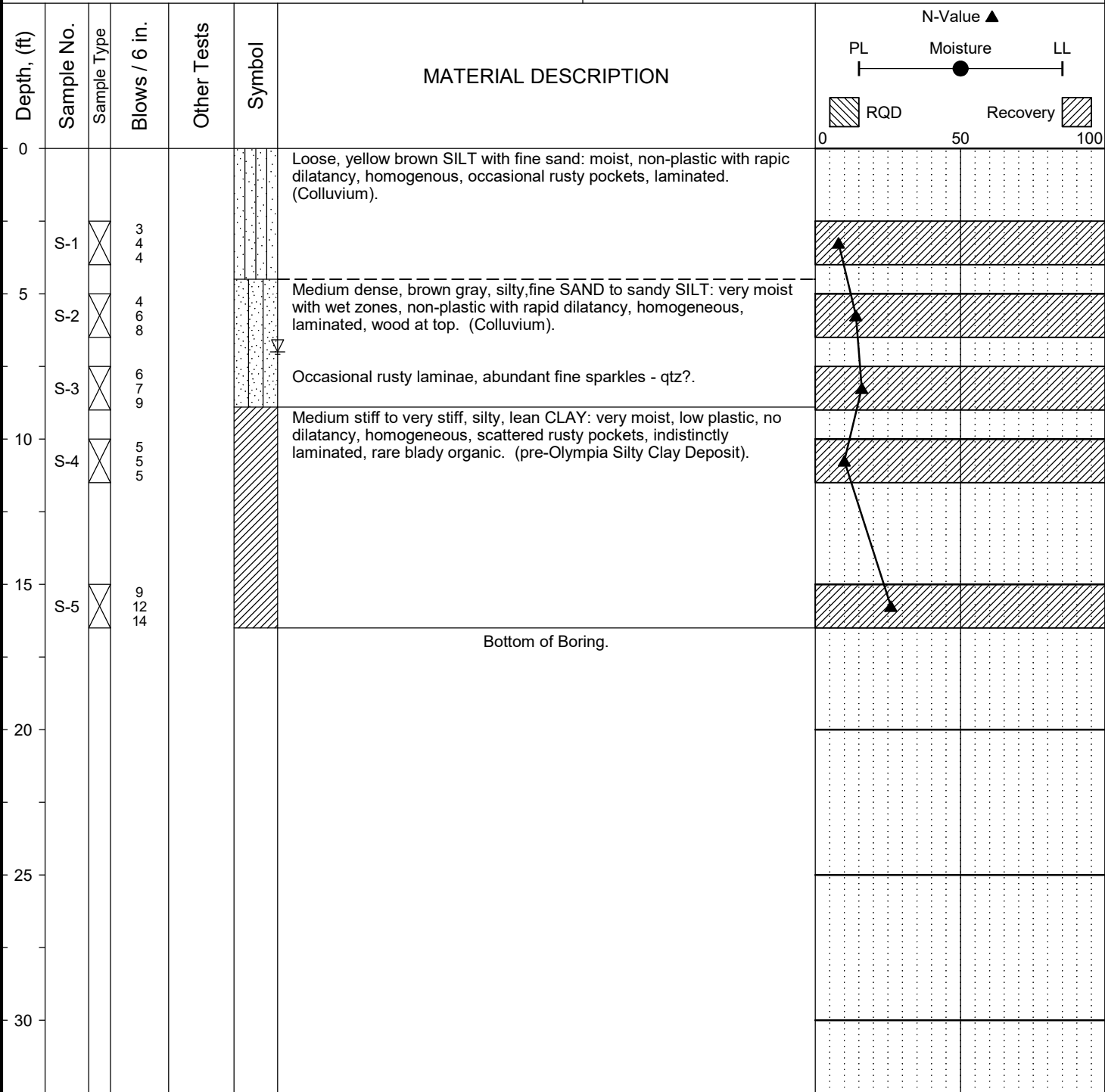
Completion Depth: 30.9ft Date Borehole Started: 3/7/19 Date Borehole Completed: 3/7/19 Logged By: S. Evans Drilling Company: Boretac, Inc	Remarks: No groundwater encountered during drilling.
---	--

Project: Proposed Lot Development Job Number: 19-062 Location: 6423 East Mercer Way, Mercer Island, WA Coordinates: Northing: , Easting:	Surface Elevation: Top of Casing Elev.: Drilling Method: HSA Sampling Method: SPT
---	--



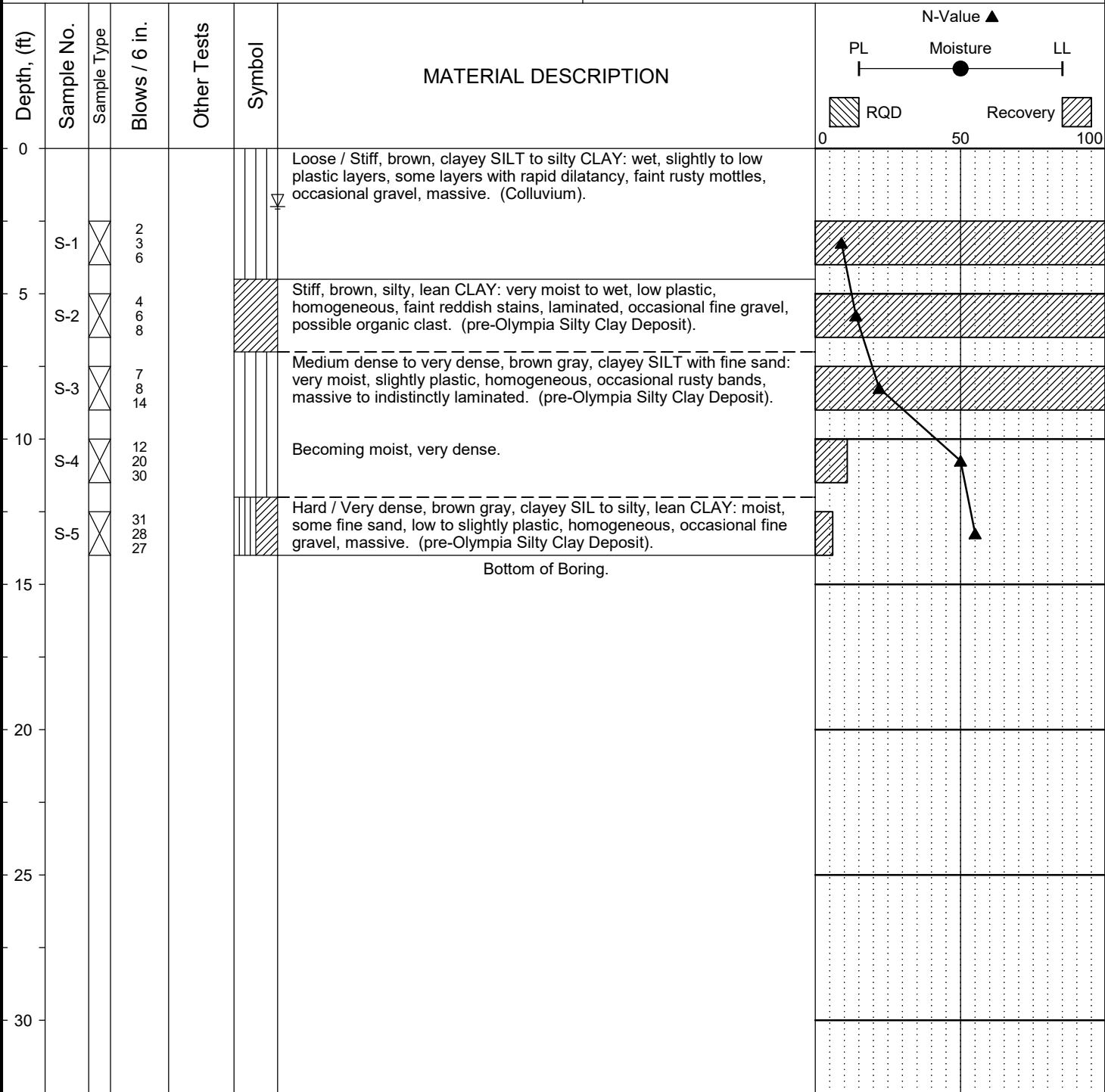
Completion Depth: 21.5ft Date Borehole Started: 3/19/19 Date Borehole Completed: 3/21/19 Logged By: S. Evans Drilling Company: Boretac, Inc	Remarks: No groundwater encountered during drilling.
---	--

Project: Proposed Lot Development Job Number: 19-062 Location: 6423 East Mercer Way, Mercer Island, WA Coordinates: Northing: , Easting:	Surface Elevation: Top of Casing Elev.: Drilling Method: HSA Sampling Method: SPT
---	--



Completion Depth: 16.5ft Date Borehole Started: 3/21/19 Date Borehole Completed: 3/21/19 Logged By: S. Evans Drilling Company: Boretac, Inc	Remarks: Groundwater level estimated based on wetness of soil sample and water on the sampling rods.
---	--

Project: Proposed Lot Development Job Number: 19-062 Location: 6423 East Mercer Way, Mercer Island, WA Coordinates: Northing: , Easting:	Surface Elevation: Top of Casing Elev.: Drilling Method: HSA Sampling Method: SPT
---	--



Completion Depth: 14.0ft Date Borehole Started: 3/21/19 Date Borehole Completed: 3/21/19 Logged By: S. Evans Drilling Company: Boretac, Inc	Remarks: Groundwater level estimated based on wetness of soil sample and water on the sampling rods.
---	--



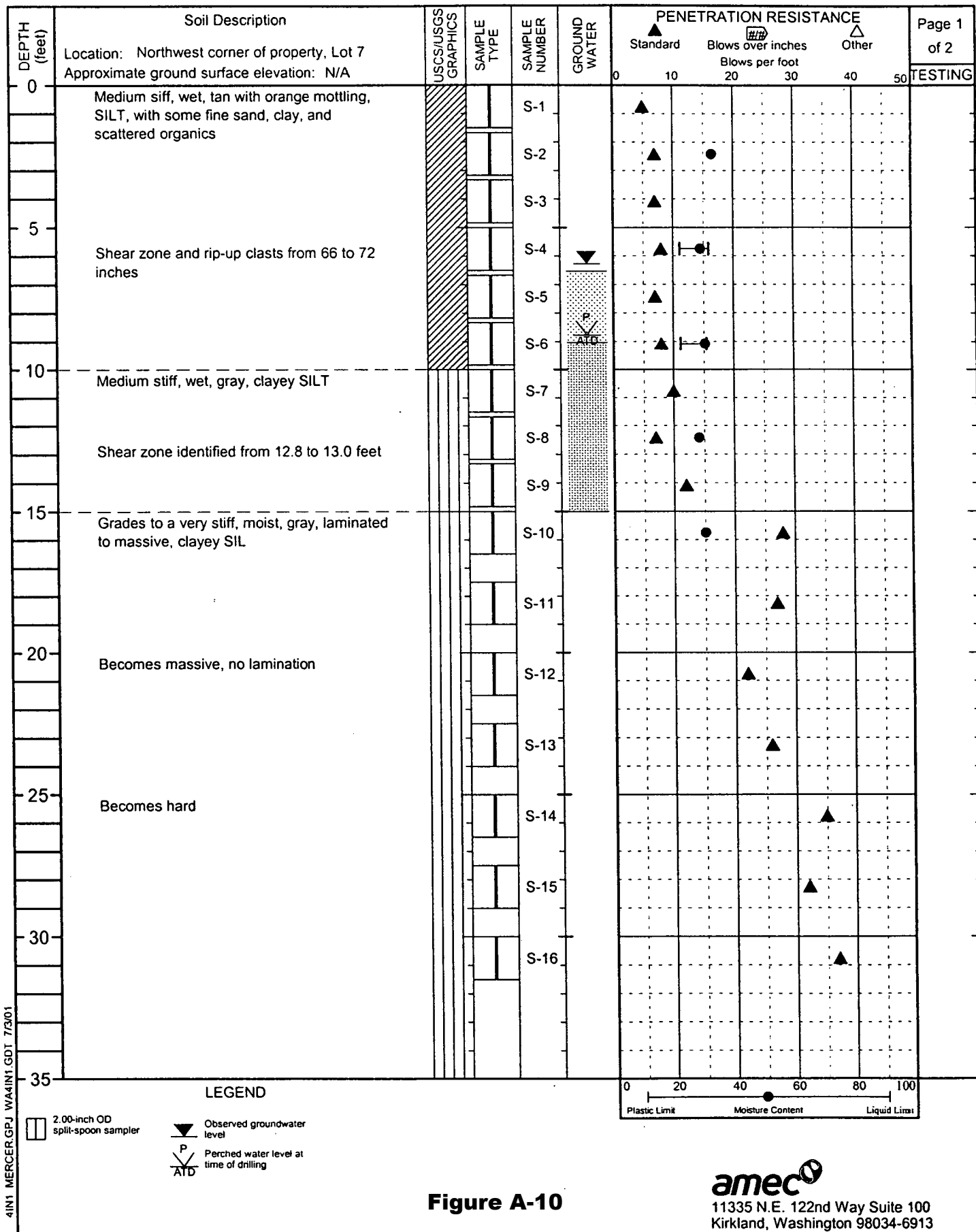


Figure A-10

**amec**  
 11335 N.E. 122nd Way Suite 100  
 Kirkland, Washington 98034-6913

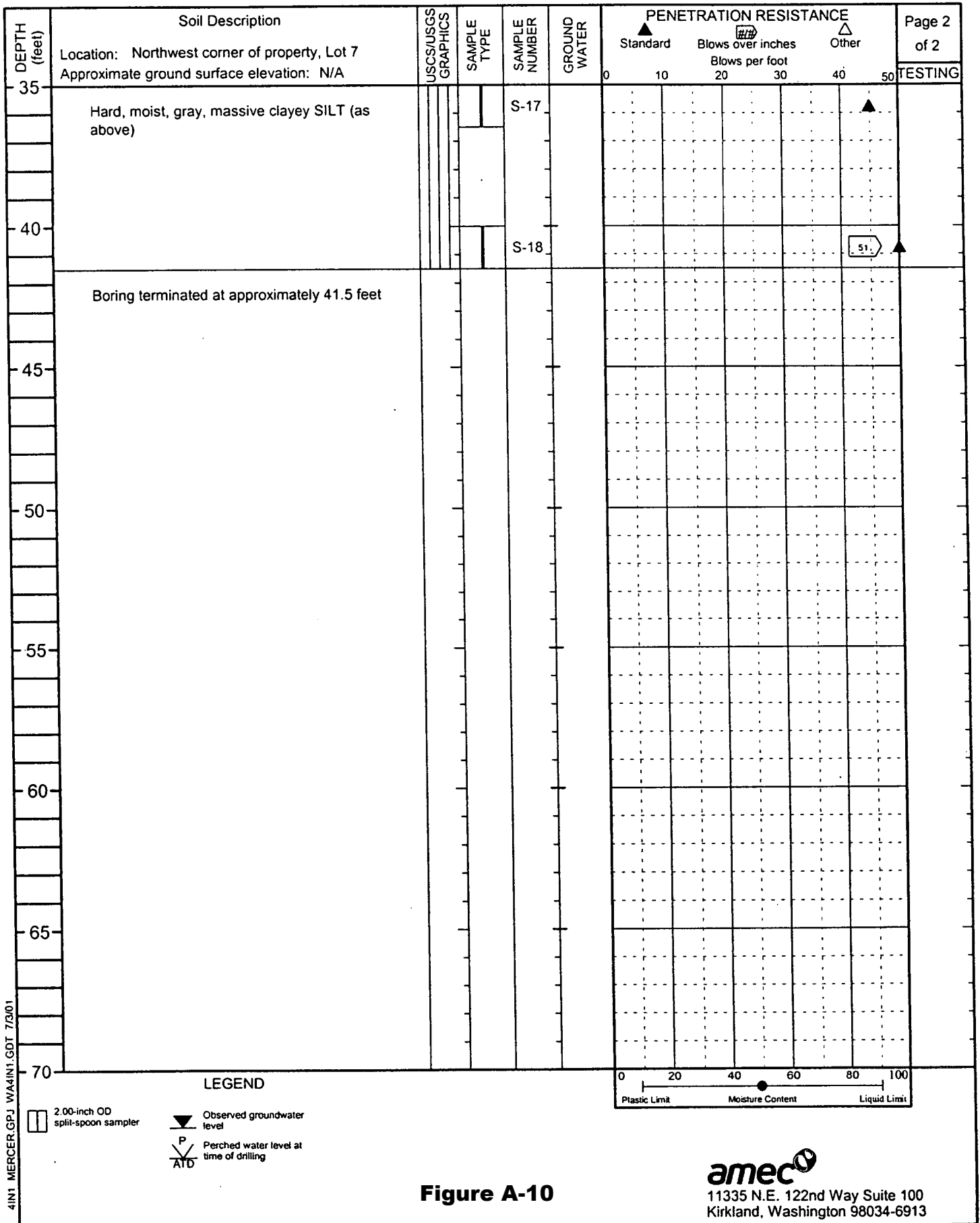


Figure A-10

**amec**  
11335 N.E. 122nd Way Suite 100  
Kirkland, Washington 98034-6913

4IN1 MERCER.GPJ WA4IN1.GDT 7/3/01

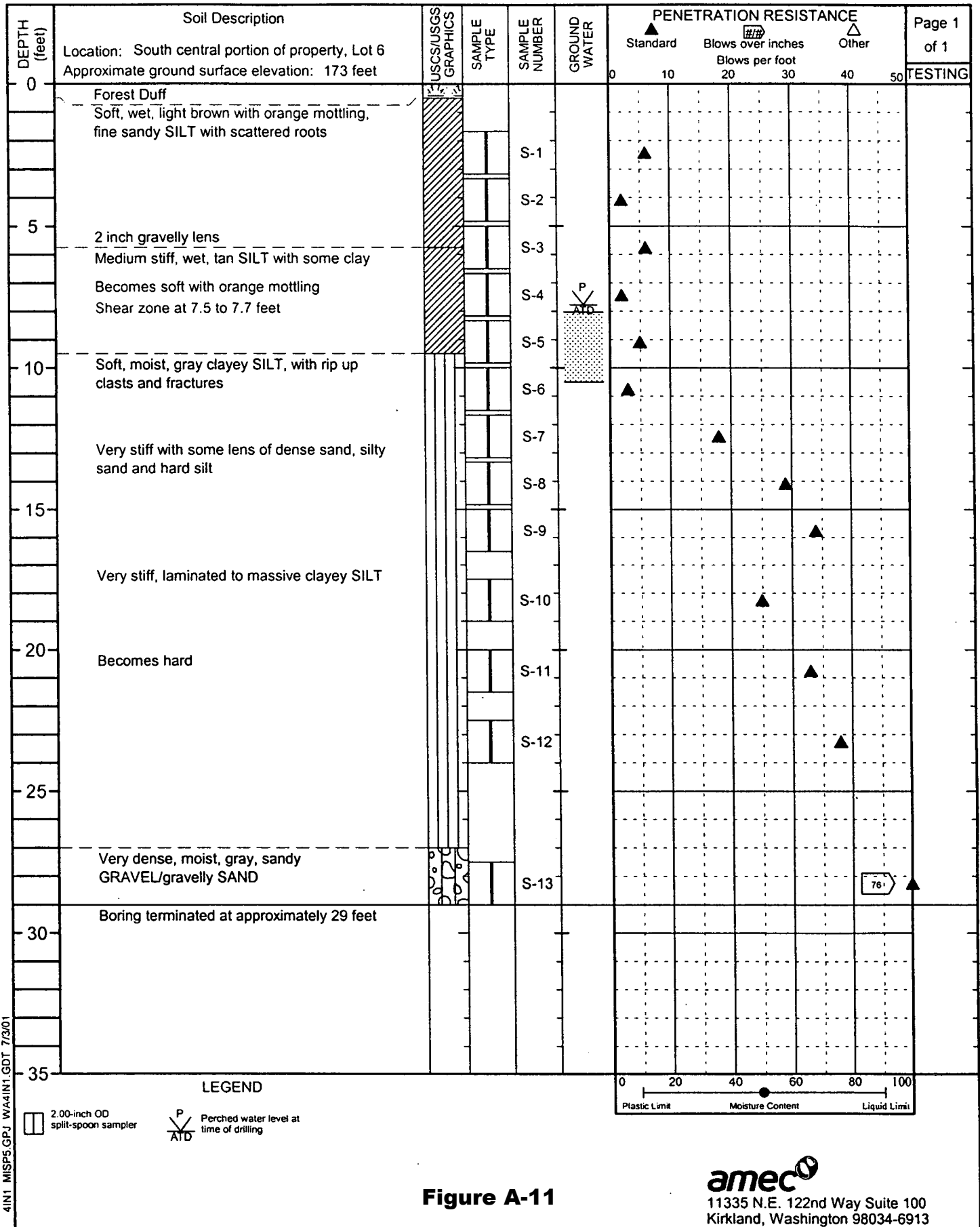


Figure A-11

**amec**  
 11335 N.E. 122nd Way Suite 100  
 Kirkland, Washington 98034-6913

4IN1 MISPE.GPJ WA4IN1.GDT 7/3/01